



West Virginia's School Report Cards



**WEST VIRGINIA BOARD OF EDUCATION
2016-2017**

Michael I. Green, President
Lloyd G. Jackson II, Vice President
Beverly E. Kingery, Secretary

Thomas W. Campbell, Member
Tina H. Combs, Member
Gayle C. Manchin, Member
F. Scott Rotruck, Member
William M. White, Member
James S. Wilson, Member

Paul L. Hill, Ex Officio
Chancellor
West Virginia Higher Education Policy Commission

Sarah Armstrong Tucker, Ex Officio
Chancellor
West Virginia Council for Community and Technical College Education

Michael J. Martirano, Ex Officio
State Superintendent of Schools
West Virginia Department of Education

Foreword

November 16, 2016

Greetings,

Today, the West Virginia Board of Education (WVBE) and West Virginia Department of Education (WVDE) are proud to release results of the West Virginia School Accountability System (WVAS). Each public school throughout West Virginia will receive a letter grade based on multiple measures of performance that together demonstrate how schools are achieving and growing.

The system is designed to provide parents and communities with an annual update and ensure parents have objective information on their students' academic achievement. Additionally, it will help schools identify their strengths and weaknesses, establish goals and develop a plan for continuous improvement to measure year-to-year student progress.

Letter grades of A through F are used so results can easily be understood by parents and the community. Under this new system, schools will be held accountable for what is considered their core mission – increasing student achievement.

The WVBE and WVDE have taken several steps to ensure the accuracy of data being presented. WVDE staff held a series of trainings throughout the last six months at each Regional Education Service Agency (RESA) to ensure superintendents and principals understood each performance measure. Training was also provided on the online portal so all staff were able to review and verify data for their school. The WVDE facilitated an extensive validation process in which schools and districts received their data under an embargo basis one month prior to the public release to allow time for review and confirmation of accuracy.

Please review this packet and use it as a resource as you navigate the WVAS. We encourage open dialogue within your local community. Get involved and reach out to your child's school to offer support. We hope you rally around this concept and view it as a means of supporting our schools. This system is not punitive, but rather celebrates successes or helps schools get better.

The WVBE and WVDE will work relentlessly with all stakeholders to make certain every student is demonstrating growth toward proficiency, attending school regularly and graduating from high school prepared for the 21st century world of work. We're committed to ensuring the next generation of West Virginians is prepared to create an even brighter future for the Mountain State.

Sincerely,

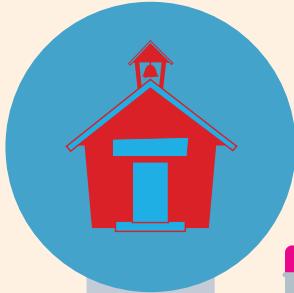


Michael J. Martirano, Ed.D.
State Superintendent of Schools



Michael I. Green
President, West Virginia Board of Education

WEST VIRGINIA SCHOOLS



668 Public Schools
in West Virginia



How do you know
how your child's
school is performing?



Schools earn grades based on 4
of success:



PERFORMANCE

The percentage of students who met grade expectations in math and English/language assessments. Reading achievement for 3rd grade and math achievement for 8th graders is also measured.



IMPROVEMENT

The percentage of students who are improving. The percentage of students on track to reach grade expectations in math and English/language assessments.



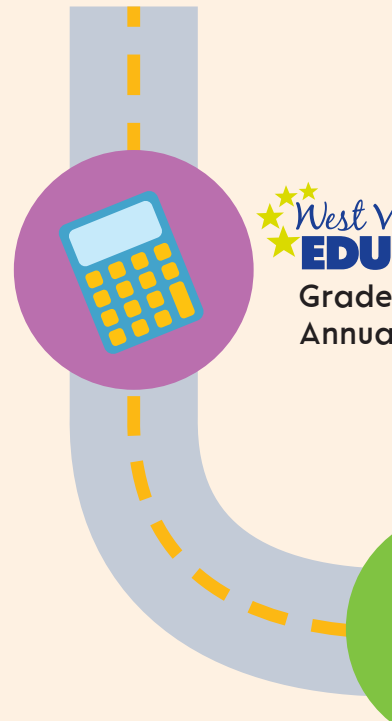
PERSISTENCE

The percentage of students participating in advanced opportunities and graduating on time as measured by attendance and graduation rates, and the number of students at-risk for dropping out.



POST-SECONDARY READINESS

The percentage of students passing Advanced Placement International Baccalaureate tests, scoring well on career-bearing courses, or completing a Career and Technical Education concentration.



Grades assigned to schools every year based on previous scores.

SCHOOL REPORT CARDS

areas

level
arts on state
graders and
measured.

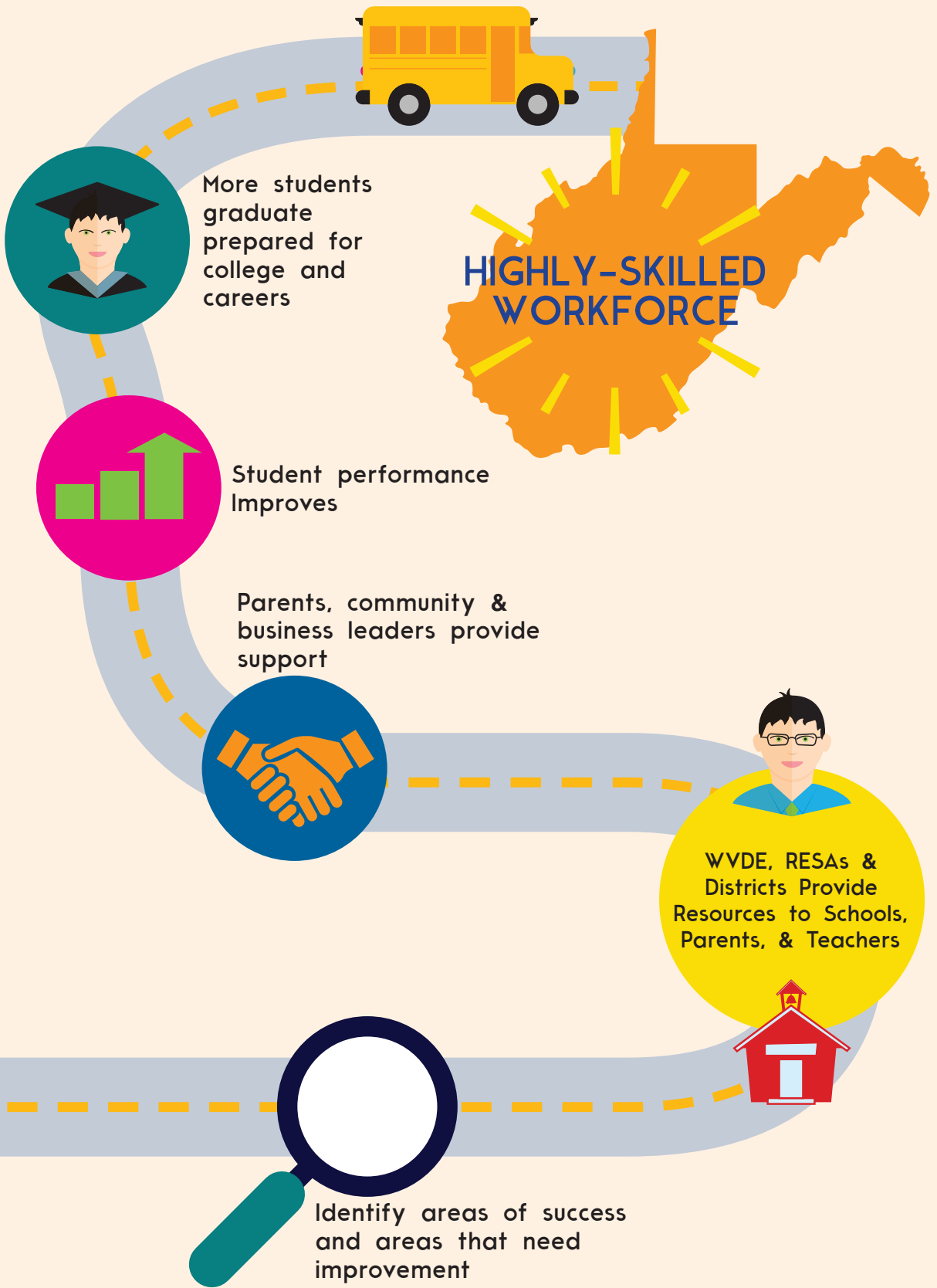
ing and the
grade-level
arts.

learning
measured by
reduction of the

S
anced Placement of
well in college-credit
and Technical Education

Virginia Department of
EDUCATION
s calculated
illy

igned to all public
ery fall based on
chool year



To learn more, visit mywvschool.org

Definitions

PERFORMANCE



Proficiency rates measure how many students are accomplishing the overall achievement standards for math and English language arts

Reading performance rates measure how many grade 3 students are reaching the achievement standards for reading

Math performance rates measure how many grade 8 students are reaching the achievement standards for math concepts and procedures

IMPROVEMENT



Observed growth rates measure how much academic growth occurred in math and ELA for each student compared to other students having similar academic histories (i.e., their academic peers)

Adequate growth rates measure student academic growth in math and ELA relative to achievement standards. Adequate growth rates provide an estimate of how much growth needs to occur for students to meet or maintain proficiency in math and ELA

Improvement of low-performing student rates measure the academic growth of students in need of substantial improvement in math or ELA

PERSISTENCE



Attendance rates measure the extent to which students capitalize on opportunities to participate in instruction and learning activities by attending school

At-risk subgroup reduction rates measure how well schools decrease the percentage of students identified as at-risk for dropping out of school based on academic, behavior and attendance risk indicators

Graduation rates measure student success and readiness for education or careers after high school





POST-SECONDARY READINESS



College- and career-ready indicator rates measure how many grade 12 students achieve college-ready benchmarks, earn college credit or complete career technical education (CTE) concentrations



MEASURES AND POINT ALLOCATIONS FOR ELEMENTARY, MIDDLE, AND HIGH SCHOOLS.

Accountability measure	Point allocations		
	Elementary schools	Middle schools	High schools
Student proficiency in math	175	175	250
 Student proficiency in ELA	175	175	250
Grade 3 reading performance	50		
Grade 8 math concepts and procedures performance		50	
Observed growth in math	100	100	100
Observed growth in ELA	100	100	100
 Adequate growth in math	100	100	100
Adequate growth in ELA	100	100	100
Improvement of low-performing students ¹ in math	100	100	100
Improvement of low-performing students in ELA	100	100	100
At-risk subgroup reduction	100	100	50
 Attendance	100	100	50
Graduation rate			150
 College- and career-ready indicators			150
Total	1,200	1,200	1,500

¹ Accelerated improvement of the lowest-performing 25 percent of students

WEST VIRGINIA SCHOOL REPORT CARDS

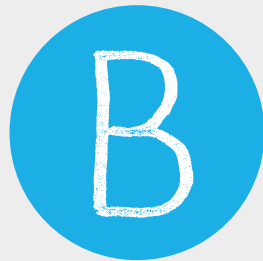


Elementary and middle schools are evaluated on a 1,200-point scale. High schools are evaluated on a 1,500-point scale



813.53-1,200 points ES
690.22-1,200 points MS
819.83-1,500 points HS

Distinctive Performance



710.29-813.52 points ES
613.45-690.21 points MS
740.69-819.82 points HS

Commendable Performance



551.10-710.28 points ES
493.92-613.44 points MS
621.51-740.68 points HS

Acceptable Performance



443.43-551.09 points ES
406.58-493.91 points MS
543.13-621.50 points HS

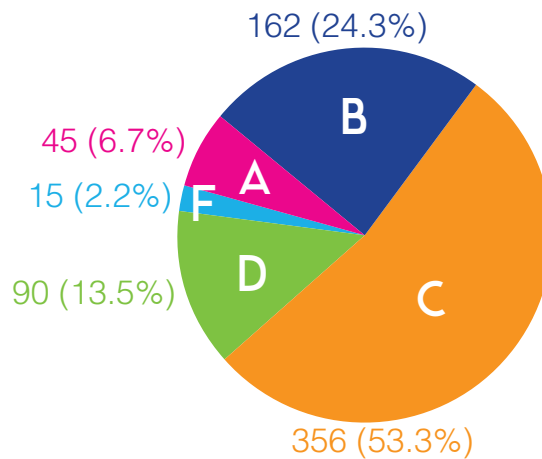
Unacceptable Performance



<443.42 points ES
<406.57 points MS
<543.12 points HS

Lowest Performance

668
public schools received grades



Core Values Used to Determine Accountability Rating:



PERFORMANCE

The percentage of students who met grade level expectations in math and English/language arts on state assessments. Reading achievement for 3rd graders and math achievement for 8th graders is also measured.



IMPROVEMENT

The percentage of students who are improving and the percentage of students on track to reach grade-level expectations in math and English/language arts.



PERSISTENCE

The percentage of students participating in learning opportunities and graduating on time as measured by attendance and graduation rates, and the reduction of the number of students at-risk for dropping out.



POST-SECONDARY READINESS

The percentage of students passing Advanced Placement of International Baccalaureate tests, scoring well in college-credit bearing courses, or completing a Career and Technical Education concentration.



FAQs

IS AN ACCOUNTABILITY SYSTEM REQUIRED?

According to the Every Student Succeeds Act (ESSA) recently signed into law, states are required to implement an accountability system. The law requires each state have an accountability system that is state-determined and based on multiple measures.

WHAT DOES ESSA REQUIRE STATES TO DO?

States must set goals for increasing the percentage of students who reach state standards in reading and math and for raising graduation rates. ESSA requires that states establish student performance goals, hold schools accountable for student achievement and include a broader measure of student performance in their accountability systems beyond test scores.

WHAT IS THE LAW GOVERNING A-F?

Senate Bill 359 amended W.Va. Code §18-2E-5 during the 2013 Legislative Session and allowed the West Virginia Board of Education (WVBE) to adopt a policy to define how schools are held accountable and how school systems are accredited. In 2014, Gov. Earl Ray Tomblin charged the WVBE to adopt policy that would assign an A-F grade to public schools. The WVBE adopted an amended accountability policy, solidifying metrics to be utilized in the existing accountability system in June 2016. Policy 2320 can be found here: <http://wvde.state.wv.us/policies/>.

WHY IS IT IMPORTANT TO HAVE AN ACCOUNTABILITY SYSTEM?

Part of our obligation to K-12 education is understanding where our students are academically and outlining a plan to increase achievement moving forward. While there are many ways we can work to improve student achievement and raise educational quality, one critical piece is the adoption and implementation of a statewide accountability system. Giving schools letter grades for their performance—just as we do for our students—ensures parents, students, educators and communities understand how their schools are performing.

WHAT IS WEST VIRGINIA'S ACCOUNTABILITY SYSTEM?

West Virginia's accountability system is designed to give parents and communities an annual update on multiple components that together show how well students are learning, growing and achieving. An A-F grading scale is used to show where schools are succeeding, as well as areas that need improvement.

WHAT IS THE PURPOSE OF THE A-F SCHOOL GRADING SYSTEM?

West Virginia's A-F school grading system gives parents, students, educators and communities clear and concise information on how well their schools are doing. This system is a new and better way of measuring and reporting school performance each year.

HOW DOES WEST VIRGINIA'S A-F SYSTEM WORK?

On an annual basis, the West Virginia Department of Education calculates grades for every public school in West Virginia based on multiple measures of success. This accountability system will help schools identify their strengths and weaknesses, establish goals, and develop a plan for continuous improvement to assess year-to-year student progress based on multiple measures of performance.



WHO ASSIGNS THE LETTER GRADES TO SCHOOLS?

A school's performance rating is calculated by the West Virginia Department of Education and then transferred to the West Virginia Office of Education Performance Audits for verification through the accreditation process. Once verified, the performance level is approved by the WVBE and communicated to schools, county school systems and communities.

HOW ARE LETTER GRADES CALCULATED FOR SCHOOLS?

Annually, schools will earn letter grades based on a comprehensive report card consisting of the following components:



Performance: The percentage of students who met grade level expectations in math and English/language arts on state assessments. Reading achievement for 3rd graders and math achievement for 8th graders is also measured.



Improvement: The percentage of students who are improving and the percentage of students on track to reach grade-level expectations in math and English/language arts.



Persistence: The percentage of students participating in learning opportunities and graduating on time as measured by attendance and graduation rates, and the reduction of the number of students at risk for dropping out.



Post-Secondary Readiness: The percentage of students passing Advanced Placement or International Baccalaureate tests, scoring well in college-credit bearing courses, or completing a Career and Technical Education concentration.

WHAT DOES EACH LETTER GRADE MEAN?

Annually, every public school will earn a grade: A, B, C, D or F. Elementary and middle schools will be graded on a 1,200-point scale and high schools will be graded on a 1,500-point scale.

Descriptions of each letter grade are as follows:

- **A** Schools with Distinctive student performance
- **B** Schools with Commendable student performance
- **C** Schools with Acceptable student performance
- **D** Schools with Unacceptable student performance
- **F** Schools with Lowest student performance

WHAT MEASURES ARE USED TO DETERMINE GRADES?

School grades are determined based on 83% student performance metrics and 17% non-performance metrics. Of the 83% student performance, 55% is based on growth and 45% is based on proficiency. The 17% non-performance metrics consider items such as attendance, graduation rates and the at-risk sub group indicator.

ARE GRADES ASSIGNED BASED ON A BELL CURVE?

Cut scores were established at each programmatic level by the WVBE in October 2016. A standard bell curve was used to set cut scores and establish a baseline during this first year of assigning grades (in 2016). A bell curve was used to eliminate subjectivity in the setting of scores. Cut scores will remain constant thereafter for a number of years so schools will know their targets for grade improvement. Cut scores will, however, be adjusted again when 65% of schools reach an A or B grade.

WHAT HAPPENS TO SCHOOLS THAT EARN LOW LETTER GRADES?

The greatest benefit of the A-F school grading system is heightened community awareness and increased dialogue and action among education stakeholders. County school systems are expected to provide additional support and monitoring. Schools that continue to perform poorly and county systems that fail to provide support will face intervention from the state level. This system is not punitive, but rather celebrates successes and helps schools get better. It is a fair system which supports our schools and aids counties in identifying areas for intervention and support. Ultimately, our students will benefit from it being in place.

WHAT ARE THE GOALS/OUTCOMES OF THE SYSTEM?

The accountability system will:

- Inform the setting of school-wide goals
- Foster conversations about academic performance between administrators and teachers
- Expand efforts to serve students in at-risk groups
- Empower schools to engage in systemic improvement
- Instill a culture of change in schools and the district with respect to using student performance data

The ultimate goal is to ensure every student is demonstrating growth toward proficiency, attending school regularly and graduating from high school prepared for college or a career.

WHAT IS A CUT SCORE?

Cut scores represent the range of points needed to earn each respective letter grade and designate where each letter grade ends and the next letter grade begins.

HOW DO SCHOOLS EARN AN AUTOMATIC F?

Schools must test 90 percent of their students. If the percent tested drops below 90, the school's grade will automatically be lowered to an F. If a school fails to test 10 percent or more of the student population that should be tested, the school performance grade is not a valid representation of overall school performance.

WHERE CAN I FIND MY SCHOOL'S REPORT CARD?

For information, resources and to find your school's report card, visit: www.mywvschool.org.

School Name	Letter Grade	ELA Proficiency	Math Proficiency	3rd Grade Reading	8th Grade Math Concepts & Procedures	ELA Observed Growth	Math Observed Growth	ELA Adequate Growth	Math Adequate Growth	Improvement of Low-Performing Students in ELA	Improvement of Low-Performing Students in Math	At-Risk Subgroup Reduction	Attendance	Graduation	College & Career Ready	Total Points Earned
School Name																
Barbour County																
Belington Elementary	B	80.14	75.23	25.96		73.58	90.57	66.04	83.02	78.57	73.33	45.69	93.94			786.07
Junior Elementary	D	41.45	46.05	28.95		33.33	61.11	33.33	22.22	20.00	60.00	42.98	94.30			483.72
Mount Vernon Elementary	F	22.83	7.61	33.33		45.45	18.18	36.36	9.09	50.00	20.00	45.65	94.95			383.45
Philippi Elementary School	C	79.92	88.19	34.92		58.62	53.45	56.90	44.83	40.00	33.33	43.44	92.72			626.32
Kasson Elementary/Middle School	B	73.44	68.75		38.89	51.69	65.17	51.69	51.69	48.00	64.00	40.27	94.11			647.70
Belington Middle School	C	68.84	43.75		18.12	45.69	48.51	43.45	34.33	37.68	40.00	38.29	94.36			513.02
Philippi Middle School	C	68.65	42.77		19.88	51.86	47.80	44.41	28.14	52.63	51.28	41.32	92.70			541.44
Philipp Barbour High School Complex	C	99.78	42.04			60.18	60.50	48.05	25.11	54.05	56.76	23.97	44.73	138.04	84.26	737.47

Berkeley County																
Valley View Elementary School *	C															
Berkeley Heights Elementary School	C	100.63	91.88	37.50		44.40	51.50	47.80	42.08	42.06	52.38	48.84	94.02			653.09
Bunker Hill Elementary	C	92.90	110.19	38.89		47.59	42.28	48.86	33.42	46.08	38.61	45.83	94.19			638.84
Burke Street Elementary School	C	83.33	91.67	35.71		41.96	47.06	40.29	36.13	48.78	48.78	44.02	93.77			611.50
Inwood Primary School	C	112.18	85.26	41.03		47.59	42.28	48.86	33.42	46.08	38.61	61.71	95.71			652.73
Rosemont Elementary School	C	109.02	87.50	37.70		44.40	51.50	47.80	42.08	42.06	52.38	46.28	95.10			655.82
Winchester Avenue Elementary School	C	87.50	92.65	36.76		44.40	51.50	47.80	42.08	42.06	52.38	56.87	93.38			647.38
Tomahawk Intermediate School	C	108.73	83.00	40.30		52.15	59.82	57.06	51.53	55.29	50.00	45.60	95.13			698.61
Potomack Intermediate School	B	93.11	88.81	34.11		58.82	70.15	60.78	61.44	58.97	69.83	44.57	94.98			735.57
Mill Creek Intermediate School	C	77.90	55.13	32.54		47.59	42.28	48.86	33.42	46.08	38.61	45.22	94.70			562.33
Eagle School Intermediate	C	70.28	51.12	30.65		41.96	47.06	40.29	36.13	48.78	48.78	46.26	95.07			556.38
Orchard View Intermediate School	C	90.64	69.47	37.50		44.40	51.50	47.80	42.08	42.06	52.38	45.45	94.35			617.63
Mountain Ridge Intermediate	C	92.65	77.70	38.07		51.03	54.97	53.37	44.44	45.98	52.87	44.59	94.65			650.32
Hedgesville Middle School	B	116.48	58.79		27.33	63.62	51.16	65.61	35.55	64.71	58.17	45.00	94.92			681.34
Martinsburg North Middle School	C	70.10	30.58		22.77	50.08	45.95	45.81	26.94	57.14	50.32	41.56	93.90			535.15
Martinsburg South Middle School	C	72.02	35.83		17.67	54.20	39.88	52.10	26.39	60.84	39.39	42.31	94.11			534.74
Muselman Middle School	A	116.86	62.37		28.75	70.58	63.65	72.38	47.74	70.00	61.43	42.93	94.72			731.41
Spring Mills Middle School	A	108.79	73.86		37.60	59.65	57.62	62.54	44.85	62.86	54.02	42.56	93.49			697.84
Mountain Ridge Middle School.	C	90.07	38.48		21.68	53.60	43.91	51.54	27.44	47.97	46.94	42.79	93.32			557.74
Back Creek Valley Elementary School *	C															

*Schools that have a K-1 or K-2 configuration will be assigned the grade of the school to which the majority of their students feed into as third graders.

School Name	Letter Grade	ELA Proficiency	Math Proficiency	3rd Grade Reading	8th Grade Math Concepts & Procedures	ELA Observed Growth	Math Observed Growth	ELA Adequate Growth	Math Adequate Growth	Improvement of Low-Performing Students in ELA	Improvement of Low-Performing Students in Math	At-Risk Subgroup Reduction	Attendance	Graduation	College & Career Ready	Total Points Earned	
Bedington Elementary School *	B																
Gerrardstown Elementary School *	C																
Hedgesville Elementary School *	C																
Marlowe Elementary School *	B																
Opequon Elementary School *	C																
Tuscarora Elementary School *	C																
Spring Mills Primary *	B																
Hedgesville High School	C	125.85	35.51			53.65	42.19	52.39	16.50	53.73	45.27	22.15	46.44	130.00	67.59	691.27	
Martinsburg High School	D	94.03	46.60			34.16	42.61	37.98	22.78	35.29	45.59	22.24	46.84	123.08	59.33	610.53	
Musselman High School	B	127.88	58.99			52.23	63.88	53.37	34.67	53.88	70.20	26.13	46.33	138.98	56.46	783.00	
Spring Mills High School	C	122.37	65.13			48.31	55.69	51.69	31.91	51.23	55.17	24.52	45.87	138.93	47.53	738.35	

Boone County

Whitesville Elementary School	C	57.65	47.35	36.00		66.10	50.85	54.24	28.81	94.12	76.47	47.93	91.82				651.34
Ashford-Rumble Elementary	C	100.46	87.50	31.25		59.46	40.54	62.16	40.54	72.73	54.55	44.47	94.32				687.98
Jeffrey-Spencer Elementary	F	81.91	29.79	30.00		32.26	16.13	25.81	0.00	27.27	18.18	41.53	93.16				396.04
Madison Elementary	C	85.42	74.40	33.62		38.89	34.58	41.67	29.91	39.29	46.43	40.73	92.53				557.47
Nellis Elementary	D	74.47	22.34	38.46		29.41	23.53	20.59	5.88	50.00	45.45	41.69	92.75				444.57
Ramage Elementary	C	67.96	54.37	22.73		57.14	47.14	55.71	42.86	52.63	35.00	46.18	90.30				572.02
Van Elementary	B	115.50	94.50	43.75		60.61	60.61	60.61	45.45	50.00	54.55	40.74	91.72				718.04
Wharton Elementary	C	91.00	56.00	40.63		64.71	52.94	61.76	50.00	60.00	50.00	39.33	92.26				658.63
Sherman Elementary School	B	102.56	93.60	33.33		65.41	67.30	66.04	62.26	66.67	73.81	45.43	92.56				768.97
Brookview Elementary	B	94.46	80.00	35.61		67.65	65.69	65.69	59.80	66.67	66.67	50.11	91.11				743.46
Madison Middle School	D	60.07	37.25		17.31	35.89	42.50	30.71	26.00	41.67	44.27	40.61	90.13				466.41
Sherman Junior High School	A	94.17	83.97		32.88	54.67	64.02	57.48	50.00	60.00	51.79	51.59	92.40				692.97
Scott High School	C	106.33	51.76			47.09	47.51	47.76	26.47	46.43	51.79	20.81	43.94	128.25	100.00		718.14
Sherman High School	C	115.00	45.61			56.79	43.01	47.50	20.43	55.56	51.39	21.12	44.59	135.29	103.33		739.62
Van Junior/Senior High School	C	113.03	60.16			48.54	54.71	49.12	35.29	44.68	48.94	20.58	45.21	118.97	52.17		691.40

Braxton County

Burnsville Elementary School	C	71.30	51.85	34.09		51.72	41.38	46.55	25.86	58.82	52.94	42.80	93.78				571.09
Davis Elementary School	B	118.83	97.22	42.11		48.39	74.19	59.68	67.74	56.25	68.75	43.12	94.49				770.77
Flatwoods Elementary School	D	62.50	41.25	28.79		36.45	38.32	32.71	22.43	23.33	37.93	48.93	94.39				467.03

*Schools that have a K-1 or K-2 configuration will be assigned the grade of the school to which the majority of their students feed into as third graders.

School Name	Letter Grade	ELA Proficiency	Math Proficiency	3rd Grade Reading	8th Grade Math Concepts & Procedures	ELA Observed Growth	Math Observed Growth	ELA Adequate Growth	Math Adequate Growth	Improvement of Low-Performing Students in ELA	Improvement of Low-Performing Students in Math	At-Risk Subgroup Reduction	Attendance	Graduation	College & Career Ready	Total Points Earned
Frametown Elementary School	C	86.30	74.32	36.36		50.98	68.63	52.94	60.78	66.67	46.67	44.39	93.89			681.93
Little Birch Elementary School	D	43.15	40.75	26.32		41.51	35.85	33.96	20.75	62.50	37.50	46.76	91.85			480.90
Sutton Elementary School	C	92.65	60.05	36.36		62.32	52.17	57.97	47.83	55.56	50.00	44.27	93.06			652.24
Braxton County Middle School	C	80.94	51.30		25.63	43.69	44.90	46.76	29.25	41.89	47.30	41.29	91.19			544.14
Braxton County High School	A	134.02	53.98			70.99	59.00	59.94	31.02	67.02	57.61	21.67	46.10	131.68	123.26	856.29

Brooke County

Beech Bottom Primary	C	80.00	60.00	34.38		68.42	47.37	68.42	26.32	70.00	60.00	44.78	94.81			654.50
Colliers Primary School	A	140.53	111.36	48.53		73.33	63.33	73.33	50.00	80.00	81.82	44.92	94.44			861.59
Franklin Primary School	B	96.64	114.93	40.32		63.89	66.67	63.89	69.44	50.00	40.00	45.77	95.55			747.10
Hooverson Heights Primary School	D	66.67	69.44	33.33		35.48	42.42	29.03	30.30	40.00	50.00	45.26	94.90			536.83
Jefferson Primary School	B	84.09	89.80	28.95		50.00	67.65	55.88	67.65	70.00	70.00	46.10	93.68			723.80
Lauretta B Millsop Primary School	B	124.19	112.90	50.00		62.50	50.00	68.75	37.50	60.00	60.00	65.76	95.44			787.04
Wellsburg Primary School	C	71.15	59.62	27.27		65.22	73.91	65.22	50.00	58.33	66.67	44.83	94.74			676.96
Follansbee Middle School	C	79.85	39.10		21.07	46.29	45.62	43.82	29.89	45.61	44.74	39.49	92.16			527.64
Wellsburg Middle School	C	83.42	57.48		36.59	48.69	52.34	47.38	41.41	43.88	55.56	40.73	93.61			601.09
Brooke High School	B	144.40	47.32			55.29	50.48	62.02	25.48	54.72	50.63	21.69	45.87	140.95	66.14	764.99

Cabell County

Altizer Elementary School	C	95.45	66.53	26.09		63.51	38.67	63.51	28.00	55.00	50.00	45.05	94.43			626.24
Cox Landing Elementary School	C	103.91	72.16	39.29		59.70	35.82	61.19	25.37	55.56	38.89	43.62	94.95			630.46
Culloden Elementary School	C	85.56	77.78	32.14		52.08	45.83	52.08	37.50	53.85	30.77	48.61	95.70			611.90
Davis Creek Elementary School	B	121.15	87.50	38.33		51.47	55.88	61.76	48.53	63.16	42.11	47.54	95.63			713.06
Guyandotte Elementary School	D	59.95	37.27	25.00		47.06	34.78	41.18	18.84	33.33	44.44	33.06	92.52			467.43
Highlawn Elementary School	C	78.16	74.76	31.08		50.00	43.75	51.56	40.63	44.44	44.44	42.42	94.33			595.57
Hite Saunders Elementary School	B	96.71	79.82	40.79		61.64	61.64	65.75	54.79	70.00	55.00	43.82	95.74			725.70
Martha Elementary School	C	102.85	85.96	35.19		58.75	53.75	65.00	50.00	52.38	42.86	47.38	95.91			690.03
Meadows Elementary School	C	117.98	92.42	41.67		40.00	56.36	50.91	45.45	46.67	53.33	44.54	95.25			684.58
Milton Elementary School	D	59.02	43.92	26.22		41.57	48.19	34.34	33.73	46.51	61.36	44.16	94.49			533.51
Nichols Elementary School	C	109.14	90.32	37.50		49.21	60.94	58.73	56.25	50.00	56.25	45.68	95.52			709.54
Ona Elementary School	C	107.69	95.27	37.93		54.21	50.94	57.94	41.51	58.62	55.17	44.52	95.20			699.00
Salt Rock Elementary School	C	110.33	76.92	42.31		50.77	46.88	52.31	39.06	76.47	52.94	42.42	94.45			684.86
Spring Hill Elementary School	D	45.55	35.16	20.13		52.71	36.43	47.29	24.81	45.45	38.24	35.22	92.91			473.90

*Schools that have a K-1 or K-2 configuration will be assigned the grade of the school to which the majority of their students feed into as third graders.

School Name	Letter Grade	ELA Proficiency	Math Proficiency	3rd Grade Reading	8th Grade Math Concepts & Procedures	ELA Observed Growth	Math Observed Growth	ELA Adequate Growth	Math Adequate Growth	Improvement of Low-Performing Students in ELA	Improvement of Low-Performing Students in Math	At-Risk Subgroup Reduction	Attendance	Graduation	College & Career Ready	Total Points Earned
Calhoun County																
Central City Elementary School	D	47.00	33.00	27.87		45.45	30.91	40.91	13.64	48.28	48.28	34.86	93.49			463.69
Village Of Barbourville Elementary School	B	97.91	89.47	36.49		54.59	69.90	57.65	61.73	56.00	70.00	43.04	95.68			732.46
Southside Elementary	C	91.10	71.92	33.90		52.63	47.37	52.63	40.79	53.85	46.15	42.53	95.52			628.39
Barbourville Middle School	C	81.14	49.93		26.82	42.21	42.35	41.93	26.77	46.37	46.67	50.31	95.06			549.56
Milton Middle School	C	83.55	45.44		22.77	47.40	50.25	47.07	33.67	44.00	54.25	48.53	94.65			571.58
Huntington Middle School	D	67.21	35.42		16.20	45.83	41.48	41.37	23.52	38.97	50.00	38.20	93.38			491.58
Huntington East Middle School	D	62.73	36.41		17.36	34.63	47.26	35.69	30.09	27.46	49.31	38.24	92.24			471.42
Cabell Midland High School	B	121.43	59.74			57.94	59.84	55.23	34.11	57.31	60.06	22.61	45.71	131.61	82.50	788.09
Huntington High School	C	92.03	36.96			47.31	43.88	42.27	20.62	46.12	42.92	19.95	43.79	114.03	77.43	627.31
Calhoun County																
Arnoldsburg School	C	112.67	93.49	38.89		33.33	50.00	47.22	50.00	40.00	20.00	71.94	92.45			649.99
Pleasant Hill School	B	96.71	78.29	38.64		53.13	59.38	59.38	53.13	70.00	60.00	56.64	93.08			718.38
Calhoun Middle/High School	D	78.73	36.81			32.33	29.83	31.48	17.60	29.03	29.75	21.52	46.43	134.81	127.08	615.40
Clay County																
Clay Elementary School	B	96.02	78.21	30.36		67.65	59.56	69.85	51.47	57.14	67.57	45.25	93.48			716.56
Lizemore Elementary School	B	107.98	119.15	42.31		44.12	55.88	41.18	58.82	40.00	40.00	72.62	94.79			716.85
H E White Elementary School	F	61.76	30.88	13.33		15.79	42.11	26.32	21.05	20.00	40.00	48.55	92.78			412.57
Big Otter Elementary School	B	124.44	75.83	33.33		65.31	61.22	75.51	59.18	64.29	50.00	66.63	95.15			770.89
Clay Middle School	C	83.79	51.50		22.32	40.46	46.13	40.72	29.64	44.44	46.94	42.93	93.43			542.30
Clay County High School	B	134.77	57.95			55.68	52.27	57.39	34.38	58.89	56.67	21.57	46.75	122.27	49.14	747.73
Doddridge County																
Doddridge County Elementary School	C	78.03	86.94	31.01		58.67	66.67	58.67	61.33	73.68	52.63	41.27	93.30			702.20
Doddridge County Middle School	C	83.44	57.97		26.54	38.28	53.14	41.58	36.30	46.84	64.56	51.87	93.63			594.15
Doddridge County High School	A	125.00	65.48			49.79	66.39	56.02	34.85	48.39	69.35	33.24	46.76	135.64	120.73	851.64
Fayette County																
Ansted Elementary	B	90.21	81.19	39.06		60.94	64.06	64.06	51.56	52.94	70.59	64.78	93.81			733.20
Divide Elementary	C	89.25	84.00	31.43		51.56	50.00	57.81	45.31	33.33	38.89	64.84	95.40			641.82
Fayetteville Elementary	C	72.60	61.14	33.87		49.37	60.76	48.10	48.10	48.84	51.16	55.12	93.79			622.85
Gatewood Elementary	D	62.22	58.33	35.19		27.78	44.44	38.89	33.33	20.00	30.00	59.94	94.87			504.99
Gauley Bridge Elementary	C	85.14	44.93	28.57		66.67	46.67	62.22	33.33	76.92	42.86	40.08	93.20			620.59

*Schools that have a K-1 or K-2 configuration will be assigned the grade of the school to which the majority of their students feed into as third graders.

School Name	Letter Grade	ELA Proficiency	Math Proficiency	3rd Grade Reading	8th Grade Math Concepts & Procedures	ELA Observed Growth	Math Observed Growth	ELA Adequate Growth	Math Adequate Growth	Improvement of Low-Performing Students in ELA	Improvement of Low-Performing Students in Math	At-Risk Subgroup Reduction	Attendance	Graduation	College & Career Ready	Total Points Earned
Meadow Bridge Elementary	C	78.75	49.58	37.50		65.91	38.64	59.09	35.23	60.87	41.67	42.35	94.03			603.62
Mount Hope Elementary	C	72.77	55.45	28.41		65.38	65.38	59.62	50.00	64.29	66.67	51.79	95.09			674.85
Rosedale Elementary	C	76.92	63.46	26.74		53.19	29.79	57.45	19.15	58.33	23.08	55.82	92.75			556.68
Valley Elementary	D	54.69	19.44	29.35		44.68	43.62	40.43	31.91	44.00	40.00	41.77	92.59			482.48
New River Elementary	B	85.51	80.21	35.77		62.81	67.77	61.16	57.02	67.74	64.52	61.48	93.63			737.62
Ansted Middle	C	58.55	34.87		17.31	45.38	51.26	42.02	31.93	40.32	46.88	70.11	92.19			530.82
Collins Middle	C	55.46	41.60		18.29	42.15	54.72	37.37	36.43	47.93	53.53	49.15	90.87			527.50
Fayetteville High	D	97.18	36.62			39.77	35.47	41.81	16.86	34.88	37.50	25.98	47.11	122.41	50.00	585.59
Meadow Bridge High	D	90.12	13.08			50.32	31.01	41.40	10.13	51.16	41.86	23.85	47.14	134.62	60.81	595.50
Midland Trail High	C	107.44	19.63			51.54	43.17	49.34	16.30	38.98	52.54	22.19	46.32	134.62	90.79	672.86
Oak Hill High	D	81.33	27.11			39.74	39.89	39.19	14.84	42.75	38.41	20.16	45.12	127.70	57.75	573.99
Valley High School	F	66.63	27.00			31.42	36.00	28.93	17.25	32.69	40.78	22.24	46.36	108.00	59.48	516.78
Gilmer County																
Glennville Elementary School	C	89.74	61.32	36.67		52.44	42.68	56.10	35.37	58.33	69.57	49.94	94.07			646.23
Normantown Elementary	A	139.35	110.19	40.91		54.76	71.43	57.14	71.43	75.00	58.33	61.36	94.46			834.36
Sand Fork Elementary	C	66.82	44.55	37.50		59.46	45.95	43.24	35.14	58.33	50.00	37.66	93.97			572.62
Gilmer County High School	B	111.20	70.23			43.80	50.70	40.88	30.28	43.06	60.56	22.34	47.23	132.86	96.09	749.23
Grant County																
Maysville Elementary School	B	106.71	85.37	42.86		66.67	56.14	70.18	47.37	56.25	56.25	47.62	94.50			729.92
Petersburg Elementary School	C	94.02	62.50	39.29		57.81	51.48	60.34	40.08	58.33	51.67	47.68	93.47			656.67
Union Educational Complex	C	118.79	51.42			48.00	34.00	49.00	18.00	51.72	51.61	23.39	46.63	135.71	78.95	707.22
Petersburg High School	B	122.07	59.01			48.60	46.83	48.97	26.68	47.48	45.26	23.63	46.11	139.11	130.93	784.68
Greenbrier County																
Crichton Elementary	C	83.85	47.40	45.83		48.57	40.00	54.29	22.86	40.00	60.00	43.84	93.12			579.76
Rainelle Elementary	C	101.50	82.25	41.67		57.63	45.76	52.54	35.59	62.50	50.00	41.51	93.34			664.29
Rupert Elementary	C	89.36	55.85	32.81		40.38	44.23	42.31	38.46	21.43	66.67	44.30	95.00			570.80
Smoot Elementary	C	135.48	73.39	50.00		48.89	44.44	57.78	31.11	50.00	50.00	65.20	93.32			699.61
Alderson Elementary	C	94.71	70.00	36.54		58.93	39.29	55.36	23.21	53.33	53.33	46.69	94.00			625.39
Frankford Elementary	C	94.86	85.05	40.70		41.67	36.67	43.33	33.33	41.18	47.06	44.24	94.31			602.40
Lewisburg Elementary	C	101.15	85.89	37.50		52.52	58.27	54.68	54.68	57.14	55.56	46.32	94.07			697.78
Ronceverte Elementary	C	86.08	71.89	33.59		49.12	68.14	48.25	50.44	43.33	60.00	45.94	94.56			651.34

*Schools that have a K-1 or K-2 configuration will be assigned the grade of the school to which the majority of their students feed into as third graders.

School Name	Letter Grade	ELA Proficiency	Math Proficiency	3rd Grade Reading	8th Grade Math Concepts & Procedures	ELA Observed Growth	Math Observed Growth	ELA Adequate Growth	Math Adequate Growth	Improvement of Low-Performing Students in ELA	Improvement of Low-Performing Students in Math	At-Risk Subgroup Reduction	Attendance	Graduation	College & Career Ready	Total Points Earned
White Sulphur Elementary	B	99.65	99.65	35.29		59.09	69.32	62.50	62.50	72.00	72.00	54.36	93.70			780.06
Eastern Greenbrier Middle School	C	85.22	60.38		33.40	45.17	53.74	45.71	40.00	47.87	50.53	54.34	92.32			608.68
Western Greenbrier Middle School	D	59.55	33.42		19.79	39.49	43.84	36.23	25.72	45.71	54.29	38.58	91.82			488.44
Greenbrier East High School	C	91.72	49.82			43.88	49.86	42.37	26.98	41.40	45.11	21.33	44.75	130.84	112.82	700.88
Greenbrier West High School	B	116.55	40.93			62.45	61.81	60.47	34.65	64.62	65.67	21.28	44.74	130.26	97.57	801.00

Hampshire County

Augusta Elementary School	C	95.08	84.00	38.89		53.25	71.43	51.95	58.44	47.62	66.67	45.02	93.27			705.62
John J. Cornwell	C	42.86	50.00	26.92		48.57	55.56	48.57	38.89	70.00	50.00	48.05	95.32			574.74
Romney Elementary School	B	95.28	79.72	36.29		61.32	64.15	63.21	53.77	65.52	53.57	46.09	93.89			712.81
Slanesville Elementary School	A	133.95	144.75	35.00		74.47	82.98	87.23	82.98	92.31	92.31	46.20	94.03			966.21
Springfield-Green Spring Elementary Sch	B	100.96	121.15	35.00		65.00	62.50	67.50	50.00	81.82	72.73	46.47	95.38			798.51
Capon Bridge Elementary School	C	87.50	68.97	33.54		60.53	65.79	57.89	45.61	40.00	60.00	45.38	93.72			658.93
Capon Bridge Middle School	C	68.37	43.75		25.30	47.22	38.55	42.46	25.30	47.62	42.86	45.88	94.24			521.55
Romney Middle School	C	88.84	54.91		23.02	56.35	44.63	55.80	30.85	52.69	41.94	43.74	93.29			586.06
Hampshire Senior High School	C	97.22	53.42			44.11	50.55	42.70	28.84	55.70	55.97	20.42	45.52	115.62	56.92	666.99

Hancock County

New Manchester Elementary School	A	102.64	116.11	41.49		67.86	76.79	64.29	76.79	62.50	82.35	42.79	95.96			829.57
A. T. Allison Elementary School	B	120.69	123.10	38.03		63.64	48.48	62.12	42.42	66.67	52.94	44.54	95.01			757.64
Weirton Elementary	C	111.74	94.59	39.13		61.27	29.29	69.72	30.71	55.26	33.33	42.16	94.60			661.80
Weir Middle School	C	78.38	62.69		29.56	50.62	56.61	48.15	43.39	48.28	55.41	44.46	93.90			611.45
Oak Glen Middle School	B	93.46	59.66		29.43	51.93	52.30	51.93	38.31	58.27	51.45	44.02	94.10			624.86
Oak Glen High School	D	99.09	36.36			44.69	38.08	41.69	17.26	44.68	40.86	21.53	47.39	130.56	32.04	594.23
Weir High School	C	130.82	52.11			52.37	42.79	57.86	26.62	62.26	45.63	21.88	47.50	135.11	39.71	714.66

Hardy County

Moorefield Intermediate School	C	83.33	66.85	36.55		50.50	45.00	50.00	38.00	46.15	38.46	42.28	94.74			591.86
East Hardy Early/Middle School	B	75.16	51.57		26.47	60.47	58.73	58.50	39.29	65.15	48.48	42.49	93.48			619.79
Moorefield Middle School	C	87.76	40.22		29.81	55.59	54.94	54.97	34.26	43.37	45.78	44.51	93.90			585.11
Moorefield Elementary School *	C															
East Hardy High School	A	125.00	63.24			54.30	55.63	55.63	34.44	56.41	64.10	21.72	47.06	140.16	126.19	843.88
Moorefield High School	B	132.40	36.71			57.72	43.17	54.41	14.76	51.43	52.86	22.96	45.95	145.91	105.00	763.28

*Schools that have a K-1 or K-2 configuration will be assigned the grade of the school to which the majority of their students feed into as third graders.

School Name	Letter Grade	ELA Proficiency	Math Proficiency	3rd Grade Reading	8th Grade Math Concepts & Procedures	ELA Observed Growth	Math Observed Growth	ELA Adequate Growth	Math Adequate Growth	Improvement of Low-Performing Students in ELA	Improvement of Low-Performing Students in Math	At-Risk Subgroup Reduction	Attendance	Graduation	College & Career Ready	Total Points Earned
School Name																
Harrison County																
Adamston Elementary School	C	71.87	70.31	31.67		62.03	77.22	59.49	64.56	57.14	63.64	39.60	92.88			690.41
Johnson Elementary School	B	108.85	84.79	38.27		61.70	68.62	65.43	58.51	58.33	69.39	44.42	94.68			752.99
Lost Creek Elementary School	D	43.75	32.24	29.63		43.75	41.67	41.67	25.00	38.46	38.46	40.21	94.56			469.40
Lumberport Elementary School	D	52.96	42.32	32.56		34.91	40.19	32.08	25.23	42.86	46.43	37.87	92.61			480.02
North View Elementary School	D	60.87	38.04	33.65		45.12	36.59	40.24	17.07	57.14	38.10	38.01	92.94			497.77
Norwood Elementary School	C	84.96	59.60	40.48		51.09	45.65	51.09	34.78	44.00	54.17	42.74	94.42			602.98
Simpson Elementary School	B	114.72	91.39	39.73		64.08	64.42	67.96	49.04	57.14	74.07	46.06	94.96			763.57
West Milford Elementary School	C	76.33	63.30	34.21		45.74	44.19	45.74	30.23	45.45	57.58	39.97	93.89			576.63
Wilsonburg Elementary School	C	80.29	78.24	33.93		60.71	76.79	55.36	64.29	37.50	64.71	37.42	92.63			681.87
Big Elm Elementary School	C	97.42	89.83	34.38		57.14	42.35	58.67	38.27	48.00	41.18	43.70	93.84			644.78
Nutter Fort Intermediate School *	C	76.18	63.60	31.05		57.59	63.78	57.59	51.70	60.24	68.60	39.75	92.40			662.48
Salem Elementary	D	70.00	55.42	41.18		48.24	28.24	48.24	24.71	47.83	26.09	38.03	92.93			520.91
Bridgeport Middle School	A	128.33	93.33		34.95	67.14	64.58	71.07	56.71	69.50	58.87	50.02	93.15			787.65
Lincoln Middle School	B	88.55	51.15		22.66	60.25	55.50	56.50	42.00	67.33	53.92	44.11	94.75			636.72
Washington Irving Middle School	C	81.60	45.95		19.09	48.05	51.02	46.41	31.97	44.80	52.03	39.44	92.25			552.61
South Harrison Middle School	B	83.44	62.03		31.88	50.21	64.81	44.21	45.49	55.74	58.33	42.13	91.09			629.36
Mountaineer Middle School	C	87.11	35.31		21.38	56.84	52.35	53.54	31.92	51.40	48.62	41.48	93.59			573.54
Nutter Fort Primary School *	C															
Bridgeport High School	A	167.72	110.61			47.93	54.34	65.41	45.09	52.99	66.42	25.87	45.88	141.96	92.81	917.03
Liberty High School	C	79.97	32.93			39.54	42.98	35.82	20.06	31.11	44.32	25.93	47.47	122.31	105.29	627.73
Lincoln High School	B	119.73	42.80			54.83	49.48	51.44	24.74	52.58	48.45	22.55	48.10	132.08	110.07	756.85
South Harrison High School	C	95.20	25.89			64.86	35.88	49.81	12.21	70.15	47.83	27.84	46.33	132.81	97.16	705.97
Robert C. Byrd High School	C	114.05	36.95			64.46	46.69	56.02	21.44	60.32	46.46	20.08	46.29	121.49	95.38	729.63
Jackson County																
Cottageville Elementary School	C	101.87	83.58	37.50		50.00	60.87	50.00	58.70	53.85	61.54	43.87	93.08			694.86
Evans Elementary School	A	159.91	147.84	50.00		73.53	64.71	85.29	73.53	80.00	54.55	84.19	96.25			969.80
Fairplain Elementary School	B	111.54	105.77	38.71		62.71	69.49	66.10	64.41	68.75	56.25	51.44	93.49			788.66
Gilmore Elementary School	C	100.26	76.56	34.85		67.21	54.84	67.21	43.55	62.50	37.50	49.61	93.78			687.87
Kenna Elementary School	C	102.20	68.60	39.13		50.00	33.33	55.13	29.49	38.10	30.00	45.39	94.79			586.16
Ravenswood Grade School	C	87.50	78.49	37.21		59.78	56.42	60.34	46.93	61.70	52.17	43.73	94.48			678.75

*Schools that have a K-1 or K-2 configuration will be assigned the grade of the school to which the majority of their students feed into as third graders.

School Name	Letter Grade	ELA Proficiency	Math Proficiency	3rd Grade Reading	8th Grade Math Concepts & Procedures	ELA Observed Growth	Math Observed Growth	ELA Adequate Growth	Math Adequate Growth	Improvement of Low-Performing Students in ELA	Improvement of Low-Performing Students in Math	At-Risk Subgroup Reduction	Attendance	Graduation	College & Career Ready	Total Points Earned
Ripley Elementary School	C	84.74	69.39	36.50		60.80	56.82	65.34	44.32	64.44	64.44	42.87	94.14			683.80
Ravenswood Middle School	C	83.96	46.34		26.61	47.64	47.97	44.59	28.04	50.00	57.14	38.01	92.98			563.28
Ripley Middle School	C	97.88	53.39		21.19	52.03	42.01	52.33	26.74	57.14	49.43	40.24	93.47			585.85
Henry J Kaiser Elementary School *	C															
Ravenswood High School	B	122.19	43.27			67.12	56.31	59.93	28.33	68.42	52.63	24.20	46.36	140.09	78.87	787.72
Ripley High School	A	137.94	49.63			61.23	55.47	60.92	29.00	63.35	54.60	26.60	46.33	143.72	98.80	827.59

Jefferson County

Blue Ridge Elementary School	D	82.08	57.30	35.29		41.67	31.58	46.21	27.82	42.86	37.14	45.53	94.75			542.23
North Jefferson Elementary	D	65.63	33.98	27.14		40.98	24.59	40.98	21.31	43.75	35.29	45.83	95.88			475.36
Ranson Elementary School	B	89.05	84.91	37.70		54.72	61.32	56.60	55.66	60.71	67.86	50.05	95.36			713.94
Shepherdstown Elementary School	B	114.33	96.44	40.67		59.12	64.23	63.50	56.93	33.33	47.22	48.60	95.27			719.64
C. W. Shipley Elementary School	B	132.63	120.66	46.21		57.14	60.71	65.18	62.50	53.33	55.17	47.74	94.93			796.20
South Jefferson Elementary School	B	93.22	87.50	39.87		55.91	69.05	55.12	54.76	61.76	79.41	44.43	95.26			736.29
Wright Denny Intermediate School	C	105.27	85.72	37.50		49.15	55.13	54.24	49.15	49.18	61.67	47.84	95.55			690.40
T A Lowery Elementary School	D	70.32	59.40	31.55		36.07	39.84	37.70	30.89	38.71	40.63	45.47	95.04			525.62
Driswood Elementary School	B	110.49	101.59	45.07		52.03	55.41	56.08	47.97	67.50	51.28	47.30	96.10			730.82
Charles Town Middle School	C	88.79	55.92		25.90	44.64	44.18	47.04	31.10	40.25	50.31	45.19	94.41			567.73
Harpers Ferry Middle School	B	112.82	68.39		28.21	51.26	46.74	56.90	36.21	57.85	45.45	45.52	94.76			644.11
Shepherdstown Middle School	B	94.19	58.52		26.86	63.88	52.84	61.87	38.80	59.21	52.63	45.43	94.92			649.15
Wildwood Middle School	C	87.85	53.47		24.70	40.76	43.51	42.02	26.57	53.72	57.02	43.72	94.31			567.65
Page Jackson Elementary *	C															
Blue Ridge Primary *	D															
Jefferson High School	B	133.45	64.17			52.88	54.40	56.50	33.37	44.66	51.74	22.53	46.67	131.07	63.04	754.48
Washington High School	B	128.70	86.69			46.92	64.07	54.47	43.84	44.39	64.04	23.45	46.94	141.94	46.35	791.80

Kanawha County

Alban Elementary School	C	89.77	79.55	37.00		46.08	50.00	46.08	42.16	53.57	48.15	63.62	94.33			650.31
Alum Creek Elementary School	C	108.62	60.34	37.50		60.78	35.29	62.75	15.69	78.57	35.71	67.79	94.63			657.67
Andrews Heights Elementary School	B	95.15	76.46	35.71		68.00	55.41	66.67	51.35	75.00	45.00	71.87	95.10			735.72
Anne Bailey Elementary School	C	75.23	55.61	23.44		53.13	50.00	48.44	37.50	55.56	44.44	71.91	95.28			610.54
Belle Elementary School	A	120.10	104.66	46.55		57.53	69.86	63.01	63.01	68.42	78.95	66.91	94.79			833.79
Bridge Elementary School	C	71.87	68.75	39.47		52.78	58.33	44.44	44.44	60.00	70.00	65.27	94.13			669.48

*Schools that have a K-1 or K-2 configuration will be assigned the grade of the school to which the majority of their students feed into as third graders.

School Name	Letter Grade	ELA Proficiency	Math Proficiency	3rd Grade Reading	8th Grade Math Concepts & Procedures	ELA Observed Growth	Math Observed Growth	ELA Adequate Growth	Math Adequate Growth	Improvement of Low-Performing Students in ELA	Improvement of Low-Performing Students in Math	At-Risk Subgroup Reduction	Attendance	Graduation	College & Career Ready	Total Points Earned
Cedar Grove Elementary School	D	40.88	44.07	32.76		43.14	45.00	35.29	32.00	50.00	46.15	59.09	92.78			521.16
Central Elementary School	C	81.49	56.11	30.00		49.38	30.86	46.91	25.93	50.00	52.38	70.49	95.28			588.83
Chamberlain Elementary School	C	89.18	75.72	37.14		35.82	43.28	38.81	34.33	44.44	55.56	57.35	93.47			605.10
Chesapeake Elementary School	C	70.43	51.22	42.50		45.90	52.46	47.54	32.79	29.41	64.71	64.62	93.93			595.51
Clendenin Elementary School	B	101.32	92.11	39.13		59.04	72.29	63.86	65.06	59.09	72.73	63.61	93.42			781.66
Cross Lanes Elementary School	C	88.79	79.78	34.88		51.09	45.65	53.26	40.22	56.00	53.85	70.21	95.35			669.08
Flinn Elementary School	C	65.41	83.25	23.56		46.39	54.64	42.27	43.30	64.00	44.00	66.49	94.06			627.37
Grandview Elementary School	C	43.18	38.64	34.09		53.85	50.00	50.00	34.62	64.29	57.14	53.10	93.56			572.47
Holz Elementary School	A	140.30	134.27	41.18		58.57	67.14	65.71	61.43	73.68	68.42	79.82	96.35			886.87
Kanawha City Elementary School	C	80.41	81.98	42.05		35.71	50.00	39.29	48.21	20.00	60.00	67.62	94.34			619.61
Kenna Elementary School	A	150.69	136.11	46.05		70.15	80.60	82.09	85.07	88.89	88.89	99.05	96.57			1024.16
Lakewood Elementary School	C	98.33	78.33	40.00		41.54	44.62	55.38	41.54	52.94	41.18	72.71	95.62			662.19
Malden Elementary School	C	59.62	67.31	24.24		65.45	74.55	60.00	54.55	66.67	66.67	57.71	92.51			689.28
Marmet Elementary School	B	89.22	78.92	42.11		62.50	65.63	62.50	65.63	63.64	54.55	73.42	94.67			752.79
Mary Ingles Elementary School	B	104.55	86.36	38.64		46.15	80.77	48.08	69.23	42.86	78.57	64.99	94.29			754.49
Midland Trail Elementary School	D	51.26	44.19	27.94		46.03	28.57	30.16	17.46	64.71	41.18	73.56	93.75			518.81
Montrose Elementary School	B	104.02	115.03	39.53		56.70	64.95	62.89	63.92	48.00	61.54	88.48	96.40			801.46
Nitro Elementary School	C	62.13	61.09	30.00		48.35	68.13	50.55	54.95	54.17	76.00	69.01	94.66			669.04
Overbrook Elementary School	B	119.74	130.79	40.91		54.31	64.66	59.48	63.79	40.00	70.00	73.97	95.66			813.31
Pinch Elementary School	B	125.59	109.12	43.40		60.91	62.73	66.36	66.36	55.17	48.28	65.04	94.89			797.85
Point Harmony Elementary School	C	100.37	84.93	41.75		43.27	32.75	49.71	28.65	40.91	33.33	68.71	94.73			619.11
Pratt Elementary School	D	57.21	50.48	33.33		27.14	57.14	21.43	40.00	31.58	57.89	57.97	92.85			527.02
Richmond Elementary School	C	74.54	76.16	31.08		27.14	34.29	27.14	32.86	42.11	52.63	73.47	95.74			567.16
Ruffner Elementary School	B	107.26	93.15	38.57		55.81	52.33	59.30	47.67	50.00	45.45	69.55	94.83			713.92
Ruthlawn Elementary School	C	108.47	89.67	42.22		44.59	43.24	48.65	41.89	40.00	40.00	65.84	95.46			660.03
Sharon Dawes Elementary School	C	60.22	57.69	35.71		41.38	50.00	39.66	35.71	66.67	60.00	66.29	93.49			606.82
Shoals Elementary School	A	100.76	101.79	35.53		63.93	78.69	72.13	77.05	75.00	75.00	73.55	94.62			848.05
Sissonville Elementary School	B	99.01	101.32	39.39		71.43	59.52	69.05	57.14	72.73	54.55	63.29	93.79			781.22
Weberwood Elementary School	B	118.64	118.64	41.67		47.95	57.53	64.38	50.68	65.00	42.86	80.05	96.42			783.82
George C. Weimer Elementary School	C	80.33	103.28	23.08		44.12	50.00	44.12	47.06	45.45	36.36	57.46	93.27			624.53
Elk Elementary Center	C	88.27	72.92	34.56		49.33	56.00	49.33	48.00	56.41	61.54	63.77	93.97			674.10

*Schools that have a K-1 or K-2 configuration will be assigned the grade of the school to which the majority of their students feed into as third graders.

School Name	Letter Grade	ELA Proficiency	Math Proficiency	3rd Grade Reading	8th Grade Math Concepts & Procedures	ELA Observed Growth	Math Observed Growth	ELA Adequate Growth	Math Adequate Growth	Improvement of Low-Performing Students in ELA	Improvement of Low-Performing Students in Math	At-Risk Subgroup Reduction	Attendance	Graduation	College & Career Ready	Total Points Earned
Bridgeview Elementary School	C	63.79	61.33	30.60		48.44	63.28	49.22	52.34	52.94	71.43	64.84	94.34			652.55
Piedmont Year-Round Education	C	88.91	63.00	29.49		61.25	50.00	65.00	45.00	57.14	40.91	62.99	94.17			657.86
Dunbar Intermediate Center	C	71.35	70.27	28.00		43.64	58.18	47.88	49.09	50.00	62.22	77.72	94.65			653.00
West Side Elementary School	F	27.95	29.17	16.13		23.94	36.62	21.13	21.13	31.58	52.63	44.09	90.36			394.73
Edgewood Elementary	D	59.04	43.22	25.49		44.14	44.14	46.85	27.93	43.33	60.00	57.36	93.92			545.42
John Adams Middle School	B	104.26	81.59		31.54	48.48	46.76	52.49	39.86	44.51	40.44	46.89	94.33			631.15
Andrew Jackson Middle School	B	92.45	61.42		24.35	57.22	48.91	57.95	39.60	60.14	56.52	47.45	94.45			640.46
Cedar Grove Middle School	C	76.63	30.88		10.78	62.94	54.55	55.94	26.57	63.16	51.35	42.53	92.98			568.31
Dunbar Middle School	C	68.90	30.31		18.80	51.66	36.84	47.51	18.28	49.46	43.62	46.61	92.75			504.74
Du Pont Middle School	C	75.45	35.63		21.90	43.99	37.03	40.19	21.84	51.85	40.00	45.27	92.69			505.84
East Bank Middle School	C	70.21	41.18		14.02	52.12	52.73	46.67	35.45	50.57	45.88	44.84	92.96			546.63
Elkview Middle School	C	78.11	46.83		24.76	50.97	49.11	48.38	34.68	47.10	42.21	44.42	93.66			560.23
Hayes Middle School	C	73.46	50.38		15.14	44.50	37.09	42.86	27.70	33.94	39.81	54.79	96.57			516.24
Horace Mann Middle School	B	103.93	54.29		22.37	55.61	41.03	56.73	28.70	55.75	53.04	50.70	95.46			617.61
Mckinley Middle School	C	64.71	41.67		18.70	41.09	39.27	39.88	26.59	45.78	45.88	49.84	94.21			507.62
Sissonville Middle School	C	69.17	36.07		12.88	44.42	34.45	40.88	21.55	47.55	41.26	57.35	93.65			499.23
South Charleston Middle School	D	80.43	46.80		17.37	37.72	34.73	38.02	22.46	38.37	37.21	43.96	93.72			490.79
Stonewall Jackson Middle School	C	65.53	33.03		18.53	52.52	52.66	44.84	30.68	57.14	60.19	39.76	91.86			546.74
Dunbar Primary Center *	C															
George Washington High School	A	177.66	112.48			52.95	54.78	67.49	45.49	54.35	56.52	22.09	48.95	137.29	100.19	930.24
Herbert Hoover High School	B	139.84	50.36			68.28	57.58	64.44	30.10	53.97	48.41	22.98	46.95	122.07	75.99	780.97
Nitro High School	B	131.11	69.13			64.72	53.75	62.50	37.93	67.72	55.56	21.99	47.62	117.01	64.39	793.43
Saint Albans High School	B	116.94	53.97			66.55	60.79	59.33	34.35	60.43	62.59	20.96	46.29	120.21	50.21	752.62
Sissonville High School	C	87.41	31.17			61.84	50.26	49.21	21.61	57.14	54.08	21.83	47.25	125.00	51.40	658.20
South Charleston High School	C	114.92	39.57			58.84	48.78	51.66	23.69	62.41	51.05	20.73	47.55	125.12	81.82	726.14
Capital High School	D	97.72	38.27			51.53	41.75	43.45	19.69	56.15	38.80	25.71	45.96	106.32	47.86	614.38
Riverside High School	F ^{PR}	84.68	33.06			54.93	63.64	44.74	28.41	53.38	55.41	20.63	46.08	118.73	75.00	678.69

Lewis County

Roanoke Elementary School	D	50.81	39.52	37.50		38.89	50.00	38.89	33.33	45.45	50.00	41.88	93.05			519.32
Peterson-Central Elementary School	D	62.96	59.76	32.39		40.28	38.89	34.72	29.17	63.16	35.00	43.54	92.50			532.37
Jane Lew Elementary School	D	52.63	39.47	25.71		50.82	45.90	52.46	34.43	25.00	50.00	45.98	93.49			515.89

*Schools that have a K-1 or K-2 configuration will be assigned the grade of the schools to which the majority of their students feed into as third graders.

^{FPR} - Per State Board Policy, a school's grade is lowered to an F if the school fails to administer the statewide summative assessment to at least 90% of its students

School Name	Letter Grade	ELA Proficiency	Math Proficiency	3rd Grade Reading	8th Grade Math Concepts & Procedures	ELA Observed Growth	Math Observed Growth	ELA Adequate Growth	Math Adequate Growth	Improvement of Low-Performing Students in ELA	Improvement of Low-Performing Students in Math	At-Risk Subgroup Reduction	Attendance	Graduation	College & Career Ready	Total Points Earned
Robert L. Bland Middle School	C	66.67	45.70		26.38	43.60	48.22	40.68	33.50	39.10	49.04	39.77	92.56			525.22
Lewis County High School	C	92.23	38.32			46.53	44.72	43.47	19.72	52.38	42.40	21.10	45.48	117.75	102.68	666.78

Lincoln County

Midway Elementary School	B	97.39	70.00	39.47		58.67	65.33	60.00	60.00	55.00	71.43	45.12	92.84			715.25
Ranger Elementary	C	78.92	50.00	39.47		46.67	63.33	50.00	50.00	54.55	63.64	50.74	93.10			640.42
West Hamlin Elementary	F	58.33	38.89	30.82		29.87	25.00	29.87	15.13	41.03	33.33	39.64	91.69			433.60
Duval Pk-8	D	64.47	37.33		20.93	36.33	45.48	33.44	27.10	30.49	44.44	45.30	92.54			477.85
Hamlin Pk-8	C	75.32	37.94		11.82	47.58	43.49	44.98	28.25	45.07	46.48	42.86	93.73			517.52
Harts Pk-8	C	63.78	52.11		22.22	42.29	46.86	38.29	37.14	45.65	34.78	41.60	90.76			515.48
Guyon Valley Middle	C	78.08	30.29		19.05	50.79	34.26	46.43	19.12	50.00	36.92	38.08	92.03			495.05
Lincoln County High School	C	92.17	31.93			47.95	51.03	42.72	20.75	54.41	57.04	20.66	44.11	129.38	90.70	682.85

Logan County

Omar Elementary	C	63.64	54.09	28.33		68.00	68.00	72.00	52.00	60.00	63.64	43.36	92.81			665.87
Buffalo Elementary School	B	74.32	107.88	40.28		83.78	72.97	78.38	67.57	70.00	40.00	38.89	89.78			763.85
Chapmanville East Elementary School	D	64.81	50.23	34.48		35.56	36.96	37.78	23.91	8.33	25.00	41.34	90.60			449.00
Holden Central Elementary School	C	91.30	98.91	41.25		53.85	53.85	57.69	50.00	45.45	70.00	41.57	92.21			696.08
Hugh Dingess Elementary School	D	75.00	62.50	36.67		66.67	8.33	66.67	0.00	60.00	10.00	40.71	92.08			518.63
Justice Elementary School	B	113.51	94.59	42.86		43.75	68.75	50.00	62.50	36.36	70.00	47.90	93.04			723.26
Logan Elementary School	B	74.24	84.85	31.40		54.72	86.79	64.15	81.13	76.92	78.57	41.54	92.02			766.33
South Man Elementary School	A	118.13	131.25	44.44		52.38	85.71	57.14	85.71	60.00	90.00	44.44	92.16			861.36
Verdunville Elementary School	C	91.48	75.57	35.00		58.33	45.83	58.33	25.00	40.00	50.00	41.11	91.70			612.35
West Chapmanville Elementary School	C	70.74	70.74	23.85		57.33	69.33	50.67	52.00	57.89	42.11	39.17	91.06			624.89
Man Elementary School	C	71.59	60.98	31.43		63.33	56.67	56.67	43.33	40.00	50.00	43.53	93.15			610.68
Man Middle School	F	54.82	15.18		9.13	38.90	27.18	30.92	11.97	42.86	35.92	39.44	92.24			398.56
Logan Middle School	D	51.97	30.27		9.65	40.39	36.61	34.43	23.07	36.47	39.18	43.02	92.33			437.39
Chapmanville Middle School	C	75.44	42.76		17.93	57.75	50.45	53.48	35.65	60.96	48.25	39.70	90.96			573.33
Chapmanville Regional High School	D	73.29	29.56			35.17	49.18	30.88	21.22	37.90	50.81	20.92	45.11	133.33	72.12	599.49
Logan Senior High School	C	115.00	25.95			63.07	53.32	54.36	17.01	57.02	59.84	21.16	45.20	123.85	69.89	705.67
Man Senior High School	D	73.21	21.09			46.89	46.89	41.31	18.69	46.15	42.50	19.79	44.80	127.89	85.98	615.19

Marion County

East Dale Elementary School	A	102.87	102.87	35.90		73.91	79.71	73.91	71.01	61.11	77.78	42.46	94.48			816.01
-----------------------------	---	--------	--------	-------	--	-------	-------	-------	-------	-------	-------	-------	-------	--	--	--------

*Schools that have a K-1 or K-2 configuration will be assigned the grade of the school to which the majority of their students feed into as third graders.

School Name	Letter Grade	ELA Proficiency	Math Proficiency	3rd Grade Reading	8th Grade Math Concepts & Procedures	ELA Observed Growth	Math Observed Growth	ELA Adequate Growth	Math Adequate Growth	Improvement of Low-Performing Students in ELA	Improvement of Low-Performing Students in Math	At-Risk Subgroup Reduction	Attendance	Graduation	College & Career Ready	Total Points Earned
East Park Elementary School	D	71.51	69.62	34.21		32.08	28.30	33.96	11.32	50.00	57.14	48.60	92.74			529.48
Fairview Elementary School	B	80.77	94.23	35.90		64.29	67.58	66.48	57.14	62.75	60.00	51.06	95.18			735.38
Jayenne Elementary School	B	99.57	108.62	38.14		53.57	62.50	57.14	60.71	66.67	53.33	45.00	95.04			740.29
Monongah Elementary School	B	107.94	96.50	44.00		63.64	41.82	65.45	34.55	60.00	64.29	42.43	95.45			716.07
Pleasant Valley Elementary School	A	103.08	117.47	37.14		55.56	63.89	61.11	55.56	60.00	90.00	75.17	95.90			814.88
Watson Elementary School	F	52.67	50.97	26.36		28.26	23.91	30.43	21.74	25.00	25.00	41.23	94.37			419.94
White Hall Elementary School	C	107.26	124.19	38.89		43.75	60.42	56.25	52.08	35.71	46.15	48.07	96.11			708.88
Blackshere Elementary School	C	85.53	80.26	39.22		53.66	78.05	50.00	62.20	42.86	57.14	42.75	93.37			685.04
Barrackville Elementary/Middle School	B	88.30	68.23		25.00	56.32	55.75	56.90	41.95	53.19	56.25	51.39	95.38			648.66
Rivesville Elementary/Middle School	C	88.34	68.15		12.07	45.45	47.59	44.24	31.93	40.00	44.44	40.84	95.38			558.43
Fairview Middle School	A	119.49	84.68		33.70	64.29	67.58	66.48	57.14	62.75	60.00	41.94	93.36			751.41
Mannington Middle School	B	85.04	49.74		29.21	56.12	54.12	55.40	38.35	56.34	46.48	51.34	93.05			615.19
Monongah Middle School	A	104.13	78.75		36.84	55.73	64.06	52.60	54.69	47.06	44.90	74.10	97.58			710.44
West Fairmont Middle School	B	97.06	63.93		27.82	63.64	51.16	61.85	37.39	58.62	40.41	40.33	94.06			636.27
East Fairmont Middle School	B	89.58	66.05		30.61	48.22	52.71	48.07	41.40	49.69	50.92	43.10	95.35			615.70
East Fairmont High School	A	158.25	71.84			72.95	61.73	68.44	42.59	73.98	51.22	23.20	47.26	132.35	56.96	860.77
Fairmont Senior High School	A	143.85	76.39			68.18	66.79	63.64	40.49	70.37	60.61	21.72	48.77	131.69	43.55	836.05
North Marion High School	C	104.77	41.37			47.88	46.15	44.59	21.35	60.45	51.52	22.36	47.20	142.82	101.52	731.98

Marshall County

Cameron Elementary School	D	55.89	36.98	23.17		43.45	38.93	37.24	20.13	38.46	39.47	37.59	93.16			464.47
Central Elementary School	C	68.62	50.99	31.91		50.29	43.02	50.29	31.98	65.91	56.82	34.35	93.19			577.37
Glen Dale Elementary School	B	115.43	104.26	38.89		42.19	64.06	59.38	65.63	33.33	52.94	41.90	96.14			714.15
Center Mcmechen Elementary School	C	105.00	83.61	44.83		48.21	51.79	50.00	39.29	53.33	73.33	41.82	94.31			685.52
Sand Hill Elementary School	C	107.69	74.04	40.00		43.75	43.75	50.00	31.25	45.45	45.45	44.59	95.15			621.12
Washington Lands Elementary School	C	111.95	77.21	45.00		38.71	36.56	48.39	36.56	54.17	29.17	42.98	95.29			615.99
Hilltop Elementary School	C	87.50	69.03	39.13		40.77	42.31	41.54	33.08	47.06	60.00	41.75	94.63			596.80
Moundsville Middle School	D	59.66	32.22		17.01	49.88	40.48	43.91	23.33	44.44	36.45	41.38	92.67			481.43
Sherrard Middle School	B	92.59	72.75		32.20	49.40	58.01	48.80	43.50	55.81	55.29	44.67	94.18			647.20
Mcninch Primary School*	C															
Cameron High School	C	101.92	46.15			44.94	39.92	44.53	23.32	43.08	46.88	21.02	45.56	140.16	81.15	678.63
John Marshall High School	C	82.78	44.39			35.19	47.29	33.66	24.90	34.27	47.22	26.32	46.12	131.05	105.60	658.79

*Schools that have a K-1 or K-2 configuration will be assigned the grade of the school to which the majority of their students feed into as third graders.

School Name	Letter Grade	ELA Proficiency	Math Proficiency	3rd Grade Reading	8th Grade Math Concepts & Procedures	ELA Observed Growth	Math Observed Growth	ELA Adequate Growth	Math Adequate Growth	Improvement of Low-Performing Students in ELA	Improvement of Low-Performing Students in Math	At-Risk Subgroup Reduction	Attendance	Graduation	College & Career Ready	Total Points Earned
School Name																
Mason County																
Beale Elementary School	C	77.62	52.22	36.67		66.29	61.80	59.55	46.07	47.83	58.33	39.61	93.75			639.74
Leon Elementary School	C	78.87	66.55	42.86		50.00	55.00	40.00	45.00	58.33	58.33	43.12	94.16			632.22
New Haven Elementary School	D	77.00	50.40	36.96		40.36	45.78	40.96	34.94	31.11	44.44	45.63	93.96			541.54
Roosevelt Elementary School	C	85.87	54.35	33.78		66.39	62.30	66.39	48.36	78.79	62.50	46.50	95.25			700.48
Ashton Elementary School	C	63.30	50.27	30.65		44.37	54.30	38.41	42.38	50.00	43.90	43.97	92.86			554.41
Pt. Pleasant Intermediate	C	69.73	44.66	37.06		44.91	53.68	41.75	37.19	44.00	41.10	45.58	93.77			553.43
Pt. Pleasant Primary *	C															
Hannan High School	C	81.84	43.72			48.60	53.74	38.79	26.17	52.63	50.00	28.60	45.50	144.74	90.00	704.33
Point Pleasant Junior/Senior High School	B	112.42	54.81			53.58	50.24	47.88	29.06	51.90	51.69	23.04	46.24	127.66	109.41	757.93
Wahama High School	A	141.46	82.74			67.57	65.00	62.55	45.00	58.82	69.12	29.86	46.27	142.11	73.91	884.41

Mercer County																
Athens Elementary School	C	91.24	88.25	38.10		45.71	48.57	51.43	48.57	45.00	47.37	41.94	93.80			639.98
Bluewell Elementary School	D	51.22	42.68	32.26		35.42	52.08	33.33	41.67	53.85	46.15	43.07	93.02			524.75
Brushfork Elementary School	C	86.52	100.28	36.76		51.02	61.22	53.06	53.06	46.15	53.85	50.20	96.36			688.48
Ceres Elementary School	C	99.17	72.92	35.42		54.29	71.43	57.14	60.00	50.00	60.00	39.62	93.49			693.48
Lashmeet/Matoaka Elementary School	C	109.62	75.00	31.03		58.06	45.16	58.06	33.87	52.94	52.94	40.06	93.43			650.17
Melrose Elementary School	B	94.67	77.46	38.89		56.94	63.89	61.11	62.50	68.42	68.42	44.22	94.66			731.18
Mercer Elementary	C	91.07	72.41	35.00		50.26	51.79	50.77	40.51	44.00	48.00	50.22	94.74			628.77
Montcalm Elementary School	C	87.50	65.06	24.32		67.52	55.56	61.54	45.30	64.52	45.16	41.70	94.00			652.18
Oakvale School	C	87.50	79.89	31.58		46.15	69.23	53.85	57.69	40.00	80.00	44.87	94.19			684.95
Spanishburg	C	86.49	72.41	32.86		50.98	64.71	54.90	54.90	50.00	60.00	42.14	94.19			663.58
Straley Elementary School	D	63.00	39.67	35.71		46.81	18.09	44.68	10.64	52.00	38.46	39.33	93.85			482.24
Sun Valley Elementary School	C	93.33	90.42	40.00		57.89	50.00	55.26	44.74	72.73	45.45	41.12	93.58			684.52
Bluefield Intermediate School	D	64.44	46.11	28.39		37.97	33.33	39.24	25.16	41.46	38.10	35.64	94.61			484.45
Glenwood School (K-8)	B	91.80	50.89		23.29	63.53	50.44	61.76	35.99	67.42	59.55	40.20	93.36			638.23
Bluefield Middle School	C	76.63	47.89		21.97	50.23	49.77	51.36	34.16	48.21	43.97	36.12	92.55			552.86
Pikeview Middle School	C	76.27	72.21		33.80	43.47	61.67	41.54	50.75	43.70	50.00	40.51	92.82			606.74
Princeton Middle School	C	79.75	44.14		23.95	53.70	42.69	51.56	30.41	50.00	38.64	36.78	92.97			544.59
Memorial Elementary School *	D															
Whitethorn Elementary School *	D															

*Schools that have a K-1 or K-2 configuration will be assigned the grade of the school to which the majority of their students feed into as third graders.

School Name	Letter Grade	ELA Proficiency	Math Proficiency	3rd Grade Reading	8th Grade Math Concepts & Procedures	ELA Observed Growth	Math Observed Growth	ELA Adequate Growth	Math Adequate Growth	Improvement of Low-Performing Students in ELA	Improvement of Low-Performing Students in Math	At-Risk Subgroup Reduction	Attendance	Graduation	College & Career Ready	Total Points Earned
School Name																
Princeton Primary School *	C	107.38	59.73			55.18	57.38	50.12	34.14	51.40	60.95	21.72	45.97	118.02	95.45	757.44
Bluefield High School	B	92.37	38.00			40.25	38.84	39.42	17.36	42.86	30.16	22.10	46.34	130.56	86.11	624.37
Montcalm High School	C	105.32	48.51			42.06	40.00	44.84	24.00	43.29	39.02	21.43	45.99	128.65	92.26	675.37
Princeton Senior High School	C	91.84	68.51			42.45	53.17	39.61	32.39	35.34	45.69	22.52	46.68	125.83	91.96	695.99
Pikeview High School	C															
Mineral County																
Elk Garden School	B	91.00	105.00	25.00		71.43	78.57	71.43	85.71	60.00	80.00	41.67	95.04			804.85
Burlington Primary	C	70.83	62.50	32.61		66.67	61.11	77.78	44.44	80.00	50.00	43.51	94.75			684.20
Fountain Primary School	C	55.49	59.76	26.19		35.00	80.00	40.00	70.00	40.00	80.00	42.65	94.36			623.45
New Creek Primary School	B	96.25	113.75	38.00		61.54	46.15	69.23	46.15	70.00	60.00	42.93	95.62			739.62
Keyser Primary School	D	71.55	62.50	35.05		43.75	43.21	43.75	33.33	33.33	28.57	39.49	94.28			528.81
Frankfort Intermediate School	C	59.50	85.77	32.29		41.41	61.62	41.41	53.54	52.00	56.00	48.27	95.42			627.23
Keyser Middle School	C	64.49	52.71		22.86	45.32	56.96	41.52	42.09	48.15	54.32	46.43	94.01			568.86
Frankfort Middle School	C	75.87	71.82		38.89	36.66	54.18	37.47	42.77	37.10	46.83	48.75	94.91			585.25
Fort Ashby Primary School *	C															
Wiley Ford Primary School *	C															
Frankfort High School	A	136.90	82.74			54.48	52.49	56.47	36.07	60.19	63.73	24.27	47.45	146.83	88.49	850.11
Keyser High School	B	118.92	41.67			56.85	48.65	56.40	25.00	53.51	59.82	23.67	46.36	144.30	97.45	772.60
Mingo County																
Burch Elementary School	C	57.73	84.79	30.43		46.81	34.04	48.94	29.79	58.33	25.00	46.41	92.81			555.08
Dingess Elementary School	C	92.27	92.27	32.81		61.90	47.62	61.90	42.86	60.00	50.00	46.85	94.01			682.49
Gilbert Elementary School	A	106.84	114.21	41.51		60.00	77.50	65.00	70.00	63.64	81.82	46.43	93.42			820.37
Lenore Pre K-8 School	C	91.60	47.06		19.38	50.78	47.19	51.71	32.19	50.00	48.19	45.13	93.39			576.62
Kermit Pre K-8	B	82.77	73.31		22.92	50.00	64.66	50.86	50.00	53.13	54.84	46.12	94.14			642.75
Williamson Pre K-8	B	96.51	69.10		21.25	60.38	59.91	61.32	45.75	64.29	55.93	46.48	94.67			675.59
Matewan Pre K-8	B	92.99	67.80		26.92	50.24	49.76	51.71	40.00	60.00	61.82	42.39	93.44			637.07
Burch Middle School	C	78.42	39.44		14.91	61.86	53.81	58.25	32.49	54.00	60.78	42.25	92.70			588.91
Gilbert Middle School	A	99.66	54.93		38.46	59.63	73.73	56.42	58.53	52.63	70.18	45.05	92.89			702.11
Tug Valley High School	B	121.09	32.23			69.23	49.32	57.92	16.74	70.18	49.12	20.45	44.22	136.00	108.00	774.50
Mingo Central Comprehensive High School	C	105.42	26.05			57.58	50.66	49.67	19.08	52.99	52.17	20.66	44.09	135.52	120.65	734.54

*Schools that have a K-1 or K-2 configuration will be assigned the grade of the school to which the majority of their students feed into as third graders.

School Name	Letter Grade	ELA Proficiency	Math Proficiency	3rd Grade Reading	8th Grade Math Concepts & Procedures	ELA Observed Growth	Math Observed Growth	ELA Adequate Growth	Math Adequate Growth	Improvement of Low-Performing Students in ELA	Improvement of Low-Performing Students in Math	At-Risk Subgroup Reduction	Attendance	Graduation	College & Career Ready	Total Points Earned
Monongalia County																
Brookhaven Elementary School	B	113.71	91.95	38.27		61.33	65.77	65.33	60.40	56.41	65.79	45.75	95.36			760.07
Ridgedale Elementary School	C	108.87	94.62	41.79		58.65	48.08	62.50	38.46	55.56	55.56	43.75	95.94			703.78
North Elementary School	B	122.29	113.65	41.38		54.36	56.45	63.76	56.45	53.42	58.11	51.06	96.06			766.99
Suncrest Primary	B	135.23	129.92	43.18		54.36	56.45	63.76	56.45	53.42	58.11	61.38	96.59			808.85
Cheat Lake Elementary School	B	112.70	106.28	42.31		53.41	53.01	58.23	48.19	46.88	44.62	51.12	96.14			712.89
Mountainview Elementary School	B	110.02	95.77	39.50		60.94	60.42	61.46	54.17	53.06	54.90	48.05	95.00			733.29
Mason-Dixon Elementary	C	78.62	86.23	41.46		47.92	44.79	44.79	38.54	30.77	26.92	55.68	94.35			590.07
Skyview Elementary School	C	97.01	73.23	38.52		54.10	64.75	55.74	52.46	56.25	46.88	57.64	95.29			691.87
Mylan Park Elementary School	C	78.56	54.44	32.58		61.90	53.06	59.18	38.78	65.79	63.16	41.64	94.18			643.27
Eastwood Elementary School	C	86.50	74.52	34.78		46.95	54.88	46.34	46.34	54.76	57.14	52.86	95.68			650.75
Mountaineer Middle School	A	120.89	93.49		31.76	56.06	59.75	60.78	53.80	46.40	52.42	44.15	95.23			714.73
Westwood Middle School	C	78.26	59.19		25.00	39.44	54.94	40.71	39.24	46.53	51.49	33.91	93.65			562.36
South Middle School	B	103.15	73.27		30.98	59.29	63.12	61.13	47.66	55.31	53.93	41.04	95.00			683.88
Suncrest Middle School	B	119.27	92.89		26.39	56.79	51.47	60.86	43.12	51.33	46.02	45.03	96.38			689.55
Clay-Battelle High School	B	121.74	76.09			49.12	62.94	47.65	41.18	42.05	48.86	22.04	47.74	139.58	69.57	768.56
Morgantown High School	B	142.52	93.07			41.32	55.69	54.45	40.75	38.59	49.33	23.40	48.37	120.93	82.08	790.50
University High School	B	133.11	84.36			47.88	54.22	53.82	37.70	41.95	52.43	23.43	48.23	131.86	91.30	800.29
Monroe County																
Peterstown Elementary School	C	72.20	59.97	32.91		41.27	36.51	46.03	23.81	47.06	68.75	45.82	92.95			567.28
Mountain View Elementary & Middle School	C	82.95	65.29		27.97	49.21	53.33	46.46	42.35	43.08	48.53	43.63	92.25			595.05
Peterstown Middle School	B	83.85	61.37		39.61	53.11	52.75	50.92	43.59	52.78	63.38	42.71	92.13			636.20
James Monroe High School	C	107.05	33.91			39.48	38.62	41.21	17.00	35.96	53.93	21.52	45.47	129.13	135.14	698.42
Morgan County																
Greenwood Elementary School	C	80.77	80.77	35.00		60.00	26.67	60.00	20.00	45.45	25.00	69.74	96.83			600.23
Paw Paw Elementary School	C	64.29	60.71	30.77		50.00	55.56	44.44	44.44	63.64	54.55	55.75	97.22			621.37
Pleasant View Elementary School	C	92.45	92.45	33.33		50.00	71.88	59.38	53.13	36.36	72.73	45.40	98.97			706.08
Warm Springs Intermediate School	C	77.15	59.91	28.70		43.67	48.36	46.94	34.84	46.03	38.10	42.18	97.31			563.19
Warm Springs Middle School	C	76.94	46.35		25.53	54.24	56.17	49.88	38.01	55.66	50.00	62.92	96.56			612.26
Widmyer Elementary *	C															
Berkeley Springs High School	B	125.52	42.98			58.31	44.98	55.58	19.63	63.96	52.25	29.71	48.12	136.79	67.21	745.04

*Schools that have a K-1 or K-2 configuration will be assigned the grade of the school to which the majority of their students feed into as third graders.

School Name	Letter Grade	ELA Proficiency	Math Proficiency	3rd Grade Reading	8th Grade Math Concepts & Procedures	ELA Observed Growth	Math Observed Growth	ELA Adequate Growth	Math Adequate Growth	Improvement of Low-Performing Students in ELA	Improvement of Low-Performing Students in Math	At-Risk Subgroup Reduction	Attendance	Graduation	College & Career Ready	Total Points Earned
Paw Paw High School	C	110.76	34.81			58.67	37.50	56.00	16.67	50.00	45.45	20.48	48.57	141.67	46.88	667.46

McDowell County

Anawalt Elementary School	B	75.57	87.50	46.43		51.72	82.76	48.28	75.86	50.00	70.00	45.52	93.95			727.59
Bradshaw Elementary School	C	76.01	70.71	32.05		54.39	45.61	52.63	36.84	56.25	25.00	40.23	88.86			578.58
Fall River Elementary School	C	108.71	92.80	41.30		67.44	46.51	67.44	41.86	50.00	23.08	40.87	90.86			670.87
laeger Elementary School	C	80.87	50.38	27.68		74.32	60.81	72.97	45.95	52.63	52.63	41.07	88.25			647.56
Kimball Elementary School	C	82.89	90.26	35.00		62.90	64.52	56.45	50.00	58.82	64.71	38.62	92.12			696.29
Welch Elementary School	D	35.53	23.68	18.89		32.14	60.71	27.38	40.48	45.45	59.09	42.99	92.76			479.10
Southside K-8	F	33.62	15.28		14.52	35.71	31.32	32.42	13.19	28.00	32.65	38.29	91.52			366.52
Sandy River Middle School	C	82.31	24.21		16.16	48.37	42.28	47.15	23.98	48.44	47.69	39.33	89.17			509.09
River View High School	C	78.39	28.25			46.11	54.66	37.38	23.29	41.98	41.98	19.21	42.74	131.10	82.05	627.14
Mount View High School	F	71.43	22.50			36.35	37.66	29.15	14.99	40.29	38.69	16.44	44.05	108.40	70.00	529.95

Nicholas County

Birch River Elementary School	C	97.60	74.04	38.24		55.88	50.00	52.94	47.06	70.00	40.00	47.37	95.01			668.14
Cherry River Elementary School	C	72.06	57.65	32.00		40.35	51.79	38.60	37.50	53.33	73.33	46.94	92.54			596.09
Dixie Elementary School	F	65.63	21.88	18.75		15.79	5.26	26.32	5.26	30.00	10.00	47.22	93.85			339.96
Glade Creek Elementary School	B	99.25	86.19	37.50		76.09	76.09	71.74	67.39	61.54	76.92	48.61	95.87			797.19
Gauley River Elementary School	C	70.41	61.09	32.76		46.23	63.21	45.28	49.06	53.57	64.29	48.21	93.96			628.07
Mt Lookout Elementary School	C	94.79	83.85	30.95		62.96	55.56	70.37	59.26	40.00	40.00	48.35	94.91			681.00
Mt Nebo Elementary School	A	106.78	103.81	42.86		74.19	74.19	77.42	67.74	81.82	72.73	46.63	95.92			844.09
Summersville Elementary School	D	64.42	57.62	26.61		43.75	36.46	42.71	27.08	40.00	30.77	46.63	94.76			510.81
Zela Elementary School	C	83.13	83.13	20.83		46.15	61.54	57.69	46.15	70.00	70.00	45.90	93.84			678.36
Panther Creek Elementary School	C	106.35	80.77	27.88		55.84	57.14	59.74	49.35	35.00	65.00	48.17	94.60			679.84
Richwood Middle School	D	69.73	36.88		22.22	34.39	42.29	33.20	27.27	33.33	50.00	43.13	92.61			485.05
Summersville Middle School	D	69.37	46.83		17.72	34.58	41.20	34.58	26.09	38.21	44.35	43.26	94.01			490.20
Nicholas County High School	C	104.17	50.10			38.83	54.47	43.84	29.31	34.68	54.92	23.13	47.13	134.29	63.16	678.03
Richwood High School	B	116.30	40.29			52.83	53.96	49.06	24.53	60.00	53.62	26.57	45.82	138.79	85.29	747.06

Ohio County

Bethlehem Elementary School	B	108.50	115.50	42.31		54.05	56.76	59.46	56.76	50.00	50.00	73.80	96.18			763.32
Elm Grove Elementary School	C	105.77	90.38	35.96		39.83	41.53	44.92	37.29	45.16	44.83	49.15	96.26			631.08
Madison Elementary School	C	101.42	57.67	47.37		43.08	32.31	46.15	24.62	41.18	47.06	46.99	94.07			581.92

*Schools that have a K-1 or K-2 configuration will be assigned the grade of the school to which the majority of their students feed into as third graders.

School Name	Letter Grade	ELA Proficiency	Math Proficiency	3rd Grade Reading	8th Grade Math Concepts & Procedures	ELA Observed Growth	Math Observed Growth	ELA Adequate Growth	Math Adequate Growth	Improvement of Low-Performing Students in ELA	At-Risk Subgroup Reduction	Attendance	Graduation	College & Career Ready	Total Points Earned
Middle Creek Elementary School	C	100.79	78.64	44.55		42.27	32.99	46.39	29.90	40.74	47.99	95.77			585.03
Ritchie Elementary School	C	100.20	90.32	36.36		44.44	37.50	43.06	34.72	38.10	33.33	48.51			601.66
Steenrod Elementary School	A	143.42	126.32	35.87		66.27	43.37	83.13	45.78	68.18	59.09	95.89			831.94
West Liberty Elementary School	B	108.18	101.82	42.50		51.43	60.00	60.00	57.14	36.36	58.33	96.12			720.27
Woodsdale Elementary School	C	109.08	97.31	38.37		51.69	53.39	58.47	42.37	53.13	54.55	96.72			703.82
Bridge Street Middle School	A	112.80	80.49		38.89	67.75	72.10	67.03	56.16	69.57	76.06	95.17			791.68
Triadelphia Middle School	A	116.24	83.03		34.73	55.21	62.24	62.24	49.48	52.58	58.00	95.06			717.97
Warwood School	B	96.89	64.76		27.19	51.05	53.85	54.20	39.51	53.33	57.33	95.46			641.00
Wheeling Middle School	C	81.91	43.75		20.69	48.41	42.04	50.32	26.11	39.02	45.45	94.16			549.66
Wheeling Park High School	B	138.31	74.29			45.21	50.35	54.19	33.54	44.00	55.02	46.89	143.22	91.04	798.46

Pendleton County

Brandywine Elementary School	A	126.60	115.43	36.17		54.05	75.68	59.46	70.27	63.64	72.73	45.14			814.56
Franklin Elementary School	C	93.41	59.12	35.00		56.70	53.61	54.64	37.11	57.14	66.67	43.02			651.91
North Fork Elementary School	D	75.49	37.75	36.36		28.21	33.33	25.64	12.82	25.00	50.00	94.75			480.46
Pendleton County Middle/High School	A	128.26	77.76			44.48	57.54	47.85	34.46	42.53	62.07	47.08	141.18	117.19	832.16

Pleasants County

Belmont Elementary School	C	77.78	72.22	27.78		60.00	60.00	64.00	60.00	60.00	80.00	45.49			702.29
St. Marys Elementary School	A	103.70	84.26	36.17		79.41	67.65	85.29	55.88	81.82	80.00	94.75			814.58
Pleasants County Middle School	B	95.05	49.36		17.68	54.87	48.53	57.47	32.25	56.96	51.90	94.83			621.91
St. Marys High School	B	113.47	30.33			64.40	53.39	54.40	21.12	67.19	50.77	45.61	141.48	102.91	773.75

Pocahontas County

Hillisboro Elementary School	C	111.81	82.64	42.31		54.55	13.64	54.55	22.73	54.55	10.00	93.22			602.57
Marlinton Elementary School	D	57.21	62.26	28.57		30.77	28.85	32.69	19.23	21.43	35.71	38.80			448.69
Green Bank Elementary-Middle School	C	73.68	63.32		27.42	46.28	55.83	44.63	41.67	47.06	54.55	93.40			586.85
Marlinton Middle School	B	84.64	67.48		36.96	50.35	73.05	49.65	56.74	52.63	75.68	92.74			675.63
Pocahontas County High School	C	84.84	75.00			46.73	55.56	40.70	36.36	47.17	48.08	45.86	123.84	86.62	711.78

Preston County

Fellowsville Elementary	C	87.50	97.22	38.89		40.00	34.29	34.29	28.57	50.00	36.36	49.02			590.54
Kingwood Elementary	F	56.29	48.10	31.40		30.86	24.69	33.33	11.11	22.73	26.09	39.35			416.87
Valley Elementary	C	58.88	48.25	26.03		51.85	51.85	51.11	41.48	58.82	55.88	42.02			579.79

*Schools that have a K-1 or K-2 configuration will be assigned the grade of the school to which the majority of their students feed into as third graders.

School Name	Letter Grade	ELA Proficiency	Math Proficiency	3rd Grade Reading	8th Grade Math Concepts & Procedures	ELA Observed Growth	Math Observed Growth	ELA Adequate Growth	Math Adequate Growth	Improvement of Low-Performing Students in ELA	Improvement of Low-Performing Students in Math	At-Risk Subgroup Reduction	Attendance	Graduation	College & Career Ready	Total Points Earned
Aurora School	C	99.01	66.78		19.08	63.16	45.61	61.40	28.07	42.11	44.44	41.96	96.78			608.40
Rowlesburg School	B	68.29	61.89		35.29	58.82	63.24	55.88	50.00	50.00	63.64	45.00	94.74			646.79
Bruceston School	C	81.80	72.38		20.59	48.80	50.52	48.45	38.49	48.68	52.63	55.57	94.88			612.79
Terra Alta/East Preston School	D	58.84	47.52		9.30	43.09	39.36	39.89	23.94	43.14	40.00	45.24	94.75			485.07
South Preston School	D	53.14	30.47		15.09	38.12	34.65	34.65	15.84	44.44	48.15	42.05	93.08			449.68
Central Preston Middle School	C	74.29	36.32		22.78	51.68	52.68	47.65	35.57	49.35	47.44	39.59	93.97			551.32
West Preston Middle School	D	68.21	35.00		14.52	45.83	39.58	41.15	20.83	48.98	36.00	39.54	93.76			483.40
Preston High School	C	95.25	29.28			46.87	43.35	41.81	17.02	50.27	49.20	20.12	45.73	126.61	132.14	697.65

Putnam County

Buffalo Elementary School	C	90.74	62.65	32.61		45.28	41.51	43.40	32.08	46.67	56.25	44.37	95.40			590.96
Confidence Elementary	B	115.81	92.65	42.86		42.50	57.50	52.50	55.00	54.55	72.73	54.97	95.26			736.33
Conner Street Elementary	C	104.59	67.31	38.46		53.45	36.21	57.76	26.72	43.33	46.67	44.48	95.26			614.24
Eastbrook Elementary School	B	112.69	96.78	40.70		77.91	60.47	79.07	54.65	78.26	52.17	52.39	95.87			800.96
George Washington Elementary School	C	102.69	80.99	38.78		43.48	31.88	52.17	26.09	66.67	44.44	44.94	94.59			626.72
Hometown Elementary	D	43.75	65.63	12.50		16.67	54.17	20.83	37.50	9.09	63.64	50.38	94.04			468.20
Hurricane Town Elementary	B	115.99	82.41	33.67		60.00	65.00	63.33	54.17	46.88	62.50	45.94	96.04			725.93
Lakeside Elementary	B	95.83	70.83	34.78		72.00	69.33	69.33	60.00	75.00	60.00	49.95	94.61			751.66
Poca Elementary	C	92.72	75.75	32.26		48.98	38.78	50.00	38.78	50.00	42.31	58.89	95.33			623.80
Rock Branch Elementary	C	98.44	76.56	26.67		44.44	55.56	50.79	47.62	50.00	62.50	46.62	94.44			653.64
Scott Teays Elementary	C	120.75	117.25	41.80		48.55	47.83	56.52	48.55	43.24	37.84	49.38	96.37			708.08
West Teays Elementary	B	128.38	116.22	42.70		53.50	64.33	62.42	59.24	57.14	62.79	46.63	95.82			789.17
Winfield Elementary	A	119.29	90.00	35.33		81.01	72.78	82.91	62.66	77.50	65.00	44.04	95.37			825.89
Mountain View Elementary School	C	109.84	77.26	41.67		65.83	54.17	66.67	46.67	56.25	40.63	45.19	95.27			699.45
George Washington Middle School	C	79.87	54.61		23.04	45.30	51.21	47.04	40.48	39.19	52.70	42.31	94.77			570.52
Hurricane Middle	A	93.94	92.21		40.70	50.23	69.66	52.97	59.31	53.88	70.45	46.11	96.03			725.49
Poca Middle School	B	98.64	59.39		20.59	61.95	54.40	63.52	39.94	74.07	66.27	53.16	92.36			684.29
Winfield Middle School	B	105.41	74.75		33.15	56.60	54.58	57.14	43.27	58.27	61.15	46.95	95.37			686.64
Buffalo High School	C	108.53	48.26			48.32	59.24	42.44	31.51	52.46	63.93	22.87	45.98	138.31	63.97	725.82
Hurricane High School	C	98.87	76.32			38.15	42.94	38.03	31.60	37.20	50.95	24.35	46.76	138.65	79.96	703.78
Poca High School	C	113.46	45.51			48.59	40.63	49.65	21.18	54.93	43.66	28.46	46.07	128.24	67.62	688.00
Winfield High School	A	149.83	92.00			57.35	60.61	60.57	44.60	57.86	63.12	27.08	47.12	140.71	60.15	861.00

*Schools that have a K-1 or K-2 configuration will be assigned the grade of the school to which the majority of their students feed into as third graders.

School Name	Letter Grade	ELA Proficiency	Math Proficiency	3rd Grade Reading	8th Grade Math Concepts & Procedures	ELA Observed Growth	Math Observed Growth	ELA Adequate Growth	Math Adequate Growth	Improvement of Low-Performing Students in ELA	Improvement of Low-Performing Students in Math	At-Risk Subgroup Reduction	Attendance	Graduation	College & Career Ready	Total Points Earned	
School Name																	
Raleigh County																	
Bradley Elementary School	B	88.01	76.75	36.07		61.11	61.11	64.81	45.37	58.62	51.72	75.25	94.75				713.57
Clear Fork District Elementary	C	67.91	28.73	35.71		60.87	65.22	56.52	34.78	53.85	69.23	50.29	95.39				618.50
Coal City Elementary	C	89.86	69.37	35.14		56.72	70.15	56.72	46.27	61.11	72.22	44.99	93.82				696.37
Crab Orchard Elementary	C	92.57	71.01	36.73		50.59	41.18	54.12	32.94	63.64	26.09	63.64	94.82				627.33
Cranberry-Prosperity Elementary	B	105.00	68.25	37.14		69.49	62.71	69.49	49.15	62.50	56.25	69.22	94.38				743.58
Crescent Elementary	B	120.31	122.50	39.80		53.40	68.93	60.19	65.05	44.44	62.96	57.06	95.78				790.42
Daniels Elementary	C	91.44	93.86	34.62		51.93	66.30	55.25	59.12	44.68	50.00	60.35	93.35				700.90
Fairdale Elementary School	C	79.46	59.82	30.41		48.70	33.04	47.83	20.87	56.67	30.00	71.90	93.00				571.70
Ghent Elementary	C	87.50	73.77	38.57		47.69	35.38	49.23	26.15	52.94	35.29	61.52	94.19				602.23
Hollywood Elementary	B	128.33	112.29	41.67		71.43	57.14	68.83	54.55	71.43	47.62	58.20	95.18				806.67
Lester Elementary	F	38.89	42.13	17.50		20.59	44.12	14.71	17.65	27.27	40.00	67.16	93.19				423.21
Mabscott Elementary	C	60.10	40.66	30.65		50.00	52.94	47.06	44.12	44.44	38.89	53.91	93.36				556.13
Maxwell Hill Elementary	C	94.12	96.25	29.76		57.89	63.16	53.95	57.89	35.00	55.00	64.06	94.89				701.97
Stanaford Elementary School	C	78.87	77.64	34.38		51.61	55.91	52.69	51.61	58.33	50.00	52.86	94.53				658.43
Shady Spring Elementary	C	78.31	68.77	31.98		45.34	49.69	45.96	40.37	44.19	42.86	57.15	93.89				598.51
Sophia-Soak Creek Elementary	C	93.64	53.73	37.50		51.32	48.68	50.00	32.89	54.55	40.91	51.75	93.22				608.19
Marsh Fork Elementary	C	70.71	60.10	30.65		56.72	55.22	49.25	38.81	33.33	44.44	66.21	91.66				597.10
Stratton Elementary	C	70.00	39.12	29.17		59.65	56.14	59.65	35.09	50.00	73.33	57.44	93.82				623.41
Beckley Elementary	D	55.96	48.84	26.72		26.36	38.18	26.36	30.00	30.00	31.03	38.55	92.74				444.74
Trap Hill Middle School	C	84.81	49.65			23.18	53.81	51.35	38.97	45.63	54.37	43.97	92.63				595.72
Park Middle School	B	104.82	70.80			25.42	52.79	50.14	38.10	55.56	45.05	43.42	93.32				638.64
Shady Spring Middle School	B	92.83	65.44			33.02	60.25	68.94	54.80	61.11	60.69	41.38	92.63				687.48
Independence Middle School	C	84.58	34.00			19.39	47.55	48.48	30.88	55.05	54.13	39.74	91.48				554.82
Beckley-Stratton Middle School	C	85.69	39.91			20.15	59.66	51.21	34.48	53.38	54.00	38.03	91.97				585.89
Independence High School	C	89.00	46.59			51.24	52.11	45.30	29.03	58.25	49.51	18.20	46.19	122.95	36.59		644.96
Liberty High School	C	96.67	27.33			64.35	50.70	49.86	16.16	65.22	63.04	19.93	44.88	128.30	54.45		680.89
Shady Spring High	C	129.95	64.97			49.26	45.59	51.47	28.31	41.30	48.18	22.10	46.24	128.78	65.63		721.78
Woodrow Wilson High School	C	107.14	54.84			45.85	50.12	46.72	25.81	40.59	49.51	21.54	45.74	119.82	59.79		667.47
Randolph County																	
Coalton Elementary School	C	93.49	50.34	26.92		54.35	50.00	63.04	43.48	53.85	46.15	42.62	96.11				620.35

*Schools that have a K-1 or K-2 configuration will be assigned the grade of the school to which the majority of their students feed into as third graders.

School Name	Letter Grade	ELA Proficiency	Math Proficiency	3rd Grade Reading	8th Grade Math Concepts & Procedures	ELA Observed Growth	Math Observed Growth	ELA Adequate Growth	Math Adequate Growth	Improvement of Low-Performing Students in ELA	Improvement of Low-Performing Students in Math	At-Risk Subgroup Reduction	Attendance	Graduation	College & Career Ready	Total Points Earned
Beverly Elementary School	D	66.58	60.87	27.50		47.06	33.33	47.06	27.45	35.71	30.77	56.75	93.97			527.05
Jennings Randolph Elementary School	C	92.83	69.08	33.33		67.61	35.71	69.01	30.00	83.33	31.58	47.62	95.16			655.26
Elkins Third Ward Elementary School	C	90.23	76.56	39.09		60.00	61.54	64.62	46.15	55.56	57.89	40.95	93.93			686.52
George Ward Elementary School	D	63.64	46.28	31.08		49.40	41.46	53.01	24.39	27.27	40.91	45.24	93.56			516.24
Homestead Elementary School	D	72.41	51.29	33.33		41.03	30.77	38.46	17.95	54.55	18.18	47.47	94.85			500.29
Midland Elementary School	B	108.67	95.97	43.59		63.86	73.49	72.29	61.45	68.18	69.57	50.73	95.26			803.06
North Elementary School	C	94.86	71.96	26.92		65.67	46.27	67.16	31.34	55.56	50.00	59.21	95.15			664.10
Valley Head Elementary School	F	20.59	10.29	5.88		45.45	27.27	27.27	18.18	45.45	27.27	40.38	94.96			362.99
Elkins Middle School	C	74.03	29.94		16.94	45.32	40.78	42.88	23.84	42.11	51.85	38.22	90.71			496.62
Harman Elementary/High School	C	89.81	48.54			50.54	50.00	38.71	22.34	55.17	48.28	19.69	46.04	137.50	100.00	706.62
Pickens Elementary/High School	B	144.23	86.54			56.52	56.52	69.57	30.43	72.73	66.67	34.80	47.95	75.00	0.00	740.96
Tygarts Valley Middle/High School	C	85.77	38.56			51.09	46.99	40.71	22.40	59.57	49.47	19.77	48.45	115.07	100.00	677.85
Elkins High School	B	132.02	67.54			56.75	57.51	57.12	37.18	59.85	57.14	23.56	47.68	128.67	93.75	818.77
Ritchie County																
Ellenboro Elementary	C	102.08	40.10	34.21		65.38	42.31	65.38	30.77	60.00	50.00	46.85	94.82			631.90
Harrisville Elementary	C	94.50	77.00	40.91		53.23	46.77	48.39	43.55	47.06	23.53	54.65	93.56			623.15
Creed Collins Elementary	C	86.62	77.78	36.67		50.00	37.50	48.44	37.50	23.53	35.29	44.56	94.16			572.05
Smithville Elementary	B	115.68	65.25	41.18		58.97	51.28	61.54	35.90	54.55	72.73	65.30	92.64			715.02
Ritchie County Middle	C	79.18	51.95		24.32	51.66	44.11	47.73	28.40	55.29	38.37	43.77	93.60			558.38
Ritchie County High School	B	112.01	34.95			58.62	46.74	55.94	22.99	65.67	47.76	21.64	46.94	135.71	111.29	760.26
Roane County																
Reedy Elementary School	C	99.06	62.74	31.25		73.53	47.06	76.47	29.41	81.82	45.45	52.66	94.39			693.84
Spencer Elementary School	C	86.96	82.61	34.27		39.71	47.06	45.59	35.29	38.89	50.00	42.15	93.16			595.69
Geary Elementary/Middle School	C	85.58	44.23		23.21	47.62	48.98	41.50	31.97	45.00	56.41	42.95	94.53			561.98
Walton Elementary/Middle School	B	92.84	59.43		25.86	59.41	54.12	60.59	45.29	68.89	60.00	39.86	93.48			659.77
Spencer Middle School	D	71.79	28.72		17.19	40.32	40.32	40.32	20.16	35.42	41.67	40.51	94.14			470.56
Roane County High	C	104.08	34.18			50.87	56.43	44.98	22.00	46.15	48.72	20.33	46.12	132.73	72.45	679.04
Summers County																
Talcott Elementary School	C	87.50	67.50	33.33		67.44	46.51	69.77	34.88	76.92	33.33	49.81	93.18			660.17
Hinton Area Elementary	D	59.52	41.67	31.10		41.27	41.27	38.10	30.16	56.25	31.25	30.47	93.18			494.24
Jumping Branch Elementary School	C	90.62	37.50	31.25		46.15	41.03	56.41	23.08	53.85	63.64	39.89	93.53			576.95

*Schools that have a K-1 or K-2 configuration will be assigned the grade of the school to which the majority of their students feed into as third graders.

School Name	Letter Grade	ELA Proficiency	Math Proficiency	3rd Grade Reading	8th Grade Math Concepts & Procedures	ELA Observed Growth	Math Observed Growth	ELA Adequate Growth	Math Adequate Growth	Improvement of Low-Performing Students in ELA	Improvement of Low-Performing Students in Math	At-Risk Subgroup Reduction	Attendance	Graduation	College & Career Ready	Total Points Earned
School Name																
Summers Middle School	D	59.06	33.44		26.24	42.18	42.97	37.40	26.26	42.71	41.24	40.15	93.01			484.66
Summers County High School	C	112.93	29.72			46.74	45.00	46.74	15.00	47.76	67.16	19.44	45.33	115.28	102.91	694.01
Taylor County																
Anna Jarvis Elementary School	D	64.32	47.30	27.98		40.21	36.46	39.18	23.96	36.00	23.08	43.57	92.75			474.81
Flemington Elementary School	A	134.90	138.54	44.44		90.48	95.24	90.48	80.95	100.00	100.00	47.40	93.99			1016.42
West Taylor Elementary School	B	111.81	109.58	40.52		67.35	48.98	69.39	42.86	53.85	61.54	48.31	95.36			749.55
Taylor County Middle School	C	74.49	42.99		17.95	46.41	52.70	44.91	35.89	43.20	46.43	38.13	93.71			536.81
Grafton High School	C	100.23	43.06			50.82	47.54	43.76	22.01	50.93	46.79	21.34	45.52	138.66	111.29	721.95
Tucker County																
Davis Thomas Elementary Middle School	C	92.65	61.76		27.50	53.40	43.69	56.31	33.98	58.62	31.03	41.32	93.67			593.93
Tucker Valley Elementary Middle School	C	75.73	49.18		20.00	42.11	37.74	42.58	25.94	47.27	43.64	39.81	92.58			516.58
Tucker County High School	C	111.59	31.12			43.87	41.94	47.74	19.35	47.50	42.50	23.69	46.14	128.57	103.28	687.29
Tyler County																
Arthur I Boreman Elementary School	C	103.08	81.51	37.76		56.84	57.89	61.05	49.47	57.69	46.15	47.08	95.23			693.75
Sistersville Elementary School	B	113.68	88.25	42.05		66.67	52.78	73.61	50.00	63.16	31.58	44.32	94.37			720.47
Tyler Consolidated Middle School	D	72.64	39.62		20.20	35.97	38.74	37.55	24.51	29.23	35.38	49.28	94.50			477.62
Tyler Consolidated High School	C	105.86	43.97			34.77	44.37	41.39	23.51	27.27	48.05	23.34	46.61	137.10	82.14	658.38
Upshur County																
Buckhannon Academy Elementary School	D	53.41	38.65	29.55		46.50	60.26	39.49	36.54	41.46	60.98	43.84	94.46			545.14
French Creek Elementary	C	61.01	49.77	27.91		53.97	43.55	53.97	32.26	47.06	47.06	41.07	94.42			552.05
Hodgesville Elementary	C	86.27	56.69	30.00		67.39	36.96	65.22	26.09	46.15	30.77	45.42	93.77			584.73
Rock Cave Elementary	C	84.85	45.08	30.95		58.14	53.49	60.47	34.88	16.67	50.00	44.37	93.95			572.85
Tennerton Elementary	C	80.11	54.23	33.33		41.05	55.79	38.95	41.05	44.00	48.00	40.04	94.41			570.96
Washington District Elementary	C	80.08	53.39	40.63		44.19	55.81	44.19	34.88	25.00	75.00	36.63	93.86			583.66
Union Elementary School	D	72.33	41.39	28.26		34.00	34.02	35.00	24.74	38.46	46.15	56.66	96.02			507.03
B-U Middle School	C	73.28	30.60		15.86	50.00	48.52	46.52	27.80	44.22	43.94	39.63	94.55			514.92
Buckhannon Upshur High School	C	93.08	28.56			47.08	46.42	45.08	20.85	43.13	50.94	21.14	46.01	127.75	79.37	649.41
Wayne County																
Buffalo Elementary School	C	81.10	77.68	37.50		53.60	52.80	48.80	42.40	57.58	57.58	52.43	94.33			655.80
Ceredo Elementary School	B	96.71	94.41	33.33		60.00	52.50	57.50	40.00	72.73	66.67	45.87	95.06			714.78

*Schools that have a K-1 or K-2 configuration will be assigned the grade of the school to which the majority of their students feed into as third graders.

School Name	Letter Grade	ELA Proficiency	Math Proficiency	3rd Grade Reading	8th Grade Math Concepts & Procedures	ELA Observed Growth	Math Observed Growth	ELA Adequate Growth	Math Adequate Growth	Improvement of Low-Performing Students in ELA	Improvement of Low-Performing Students in Math	At-Risk Subgroup Reduction	Attendance	Graduation	College & Career Ready	Total Points Earned
Crum Elementary School	B	92.65	84.41	35.19		58.93	73.21	55.36	60.71	68.75	88.24	50.96	92.14			760.55
Dunlow Elementary School	B	109.38	91.88	43.75		52.17	73.91	65.22	73.91	45.45	80.00	50.22	95.45			781.34
Genoa Elementary School	D	76.28	40.38	18.18		44.44	25.93	48.15	14.81	40.00	30.00	41.38	92.79			472.34
Kellogg Elementary School	C	100.78	92.19	37.04		51.15	45.45	54.96	46.97	41.18	35.29	62.30	95.46			662.77
Kenova Elementary School	B	95.68	84.35	34.21		64.94	64.94	64.94	53.25	71.43	55.00	45.29	94.94			728.97
Lavalette Elementary School	B	110.98	86.79	38.54		55.71	62.86	61.43	62.86	57.89	78.95	51.98	94.03			762.02
Prichard Elementary School	B	94.67	71.72	26.47		59.52	59.52	61.90	57.14	75.00	58.33	58.24	94.53			717.04
Wayne Elementary School	C	91.55	84.07	37.24		51.43	69.14	48.57	57.14	52.17	74.47	44.59	93.64			704.01
East Lynn Elementary School	B	105.00	105.00	40.48		63.89	83.33	69.44	77.78	60.00	60.00	33.33	91.57			789.82
Fort Gay Pre K-8	D	63.98	39.92		17.46	46.56	38.87	40.49	22.67	46.15	41.18	42.43	93.09			492.80
Buffalo Middle School	C	73.06	41.25		29.72	50.97	55.25	46.69	32.68	50.00	61.54	40.59	93.68			575.43
Ceredo-Kenova Middle School	C	75.77	42.75		26.28	52.72	53.97	48.54	37.66	47.62	55.56	42.66	93.91			577.44
Crum Middle School	D	74.50	43.32		17.74	35.42	35.42	36.46	23.96	38.46	42.31	40.20	92.17			479.96
Wayne Middle School	C	73.21	36.79		21.64	62.85	45.55	58.81	29.66	59.50	36.97	38.54	92.12			555.64
Vinson Middle School	B	90.91	73.48		23.33	57.80	49.54	57.34	38.99	51.72	46.43	46.06	95.12			630.72
Wayne High School	D	76.81	13.70			44.54	41.14	34.45	10.76	44.72	51.22	22.33	45.08	117.92	115.47	618.14
Tolisia High School	C	82.24	22.13			45.93	42.38	40.37	18.22	46.38	41.43	21.88	44.82	126.06	117.72	649.56
Spring Valley High School	D	60.88	41.44			33.28	45.09	30.16	25.99	38.78	46.21	22.69	45.84	123.33	103.13	616.82

Webster County

Glade Elementary School	D	64.17	46.67	30.21		40.65	39.02	39.02	22.76	37.50	48.48	44.82	93.92			507.22
Webster Springs Elementary School	C	68.48	53.26	29.07		53.15	38.74	51.35	30.63	66.67	40.00	58.31	94.20			583.86
Hacker Valley Elementary School	A	115.00	127.70		36.49	41.94	84.38	45.16	84.38	45.45	100.00	98.39	96.42			875.31
Webster County High School	C	105.18	35.94			48.24	45.15	41.19	22.03	50.43	46.61	27.53	46.00	140.63	100.49	709.42

Wetzel County

Paden City Elementary School	C	87.50	44.49	34.00		49.45	42.86	47.25	27.47	48.00	44.00	47.66	94.70			567.38
Long Drain School	C	90.55	50.87		25.76	51.77	39.16	50.35	25.17	51.28	36.84	50.62	93.89			566.26
New Martinsville School	B	77.70	56.78		28.19	59.86	58.06	54.63	41.94	54.13	55.96	46.00	94.27			627.52
Short Line School	C	72.79	49.26		23.75	47.45	58.16	48.98	37.76	44.44	60.38	44.30	92.51			579.78
Hundred High School	D	77.70	27.03			31.43	47.14	31.43	11.43	26.32	63.16	23.72	47.03	139.66	94.44	620.49
Magnolia High School	B	114.44	35.21			55.41	51.56	49.10	22.67	50.00	54.24	22.99	47.13	141.18	98.97	742.90
Paden City High School	B	130.95	56.51			50.69	38.46	54.86	18.18	56.41	41.03	24.30	47.63	145.83	128.57	793.42

*Schools that have a K-1 or K-2 configuration will be assigned the grade of the school to which the majority of their students feed into as third graders.

School Name	Letter Grade	ELA Proficiency	Math Proficiency	3rd Grade Reading	8th Grade Math Concepts & Procedures	ELA Observed Growth	Math Observed Growth	ELA Adequate Growth	Math Adequate Growth	Improvement of Low-Performing Students in ELA	Improvement of Low-Performing Students in Math	At-Risk Subgroup Reduction	Attendance	Graduation	College & Career Ready	Total Points Earned
Valley High School	B	103.07	21.93			61.61	65.18	48.21	20.54	60.00	60.00	22.35	46.37	138.24	111.70	759.20
Wirt County																
Wirt County Primary Center	D	65.22	52.17	29.22		45.12	39.02	45.12	26.83	33.33	47.62	46.31	93.35			523.31
Wirt County Middle School	B	82.42	64.51		23.13	60.56	59.36	54.93	45.58	66.22	52.70	49.20	94.26			652.87
Wirt County High School	C	118.23	55.69			56.70	56.48	50.00	30.57	48.98	42.00	22.58	46.11	136.57	76.19	740.10
Wood County																
Blennerhassett Elementary School	B	112.08	112.08	40.91		54.17	59.17	62.50	59.17	51.61	54.84	45.99	94.90			747.42
Criss Elementary School	B	107.69	85.26	44.12		58.02	64.20	59.26	55.56	57.14	52.38	46.58	95.20			725.41
Emerson Elementary School	B	108.45	71.48	30.77		61.46	62.50	66.67	50.00	57.69	70.37	42.59	94.77			716.75
Fairplains Elementary School	D	65.12	54.94	35.71		41.30	47.83	43.48	34.78	38.46	21.43	36.71	92.21			511.97
Gihon Elementary School	A	126.94	117.08	45.35		60.42	71.88	62.50	62.50	76.00	76.00	43.29	94.44			836.40
Greenmont Elementary School	B	130.45	98.64	44.12		68.49	50.68	72.60	49.32	61.90	35.00	49.77	94.70			755.67
Jefferson Elementary Center	D	54.51	37.30	25.41		50.00	52.59	45.61	33.62	48.39	58.06	35.81	92.73			534.03
Kanawha Elementary School	C	88.11	79.55	33.33		59.57	67.74	56.38	53.76	60.00	45.83	41.81	94.26			680.34
Lubeck Elementary School	C	95.90	87.01	42.11		43.48	51.30	42.61	40.87	56.67	46.67	53.30	94.95			654.87
Madison Elementary School	C	114.75	91.80	45.83		41.67	21.43	46.43	21.43	52.17	30.43	39.18	93.86			598.98
Mckinley Elementary School	D	61.38	53.54	24.36		43.33	33.33	37.78	27.78	50.00	37.50	34.10	93.34			496.44
Mineral Wells Elementary School	C	76.56	72.06	32.29		50.57	61.49	50.00	47.13	55.56	55.56	43.95	94.07			639.24
Neale Elementary School	B	111.58	97.48	43.48		70.00	62.00	68.00	55.00	74.07	59.26	45.52	94.84			781.23
Vienna Elementary School	C	102.08	98.11	30.95		52.33	52.33	55.81	59.30	59.09	50.00	44.81	95.74			700.55
Waverly Elementary School	C	84.26	68.06	28.95		57.14	60.00	51.43	51.43	54.55	45.45	41.38	94.41			637.06
Williamstown Elementary School	A	127.98	102.38	37.50		68.66	69.59	75.12	60.37	71.93	77.59	46.03	95.17			832.32
Worthington Elementary School	C	89.82	89.82	38.89		44.16	40.26	44.16	35.06	36.36	33.33	41.71	94.34			587.91
Franklin Elementary Center	D	66.99	49.22	26.92		46.51	46.51	45.35	33.72	34.78	39.13	37.13	94.47			520.73
Martin Elementary School	C	65.42	44.16	34.29		54.55	65.15	45.45	40.91	44.44	83.33	41.62	93.52			612.84
Blennerhassett Middle School	C	74.76	38.56		18.75	49.90	45.21	46.22	28.72	48.80	48.80	42.61	93.77			536.10
Edison Middle School	B	95.01	62.72		37.04	57.94	64.93	55.89	50.37	58.52	51.85	52.18	94.09			680.54
Hamilton Middle School	B	86.02	56.25		32.46	53.01	57.12	50.29	41.13	58.02	56.92	43.64	94.30			629.16
Jackson Middle School	C	102.85	65.86		31.79	44.97	40.94	50.56	32.44	46.96	44.74	46.18	94.83			602.12
Van Devender Middle School	D	52.85	31.18		19.63	40.25	48.44	31.89	26.88	45.12	44.58	38.41	93.13			472.36
Parkersburg High School	C	118.08	50.17			50.63	48.04	50.91	26.85	53.48	50.00	20.91	45.36	128.38	66.49	709.30

*Schools that have a K-1 or K-2 configuration will be assigned the grade of the school to which the majority of their students feed into as third graders.

School Name	Letter Grade	ELA Proficiency	Math Proficiency	3rd Grade Reading	8th Grade Math Concepts & Procedures	ELA Observed Growth	Math Observed Growth	ELA Adequate Growth	Math Adequate Growth	Improvement of Low-Performing Students in ELA	Improvement of Low-Performing Students in Math	At-Risk Subgroup Reduction	Attendance	Graduation	College & Career Ready	Total Points Earned
Parkersburg South High School	C	106.71	47.89			44.42	46.75	44.52	24.82	47.81	42.91	21.90	46.58	135.44	88.03	697.78
Williamstown High School	B	145.35	62.98			51.20	52.60	57.20	30.40	54.69	57.81	25.70	48.08	135.98	66.49	788.48
Wyoming County																
Berlin McKinney Elementary School	D	72.80	56.00	32.79		31.67	21.67	33.33	18.33	18.75	18.75	47.40	91.98			443.47
Mullens Elementary School	D	68.82	39.33	28.38		44.90	30.61	46.94	24.49	35.71	38.46	36.16	94.13			487.93
Pineville Elementary School	B	109.80	104.66	36.73		76.00	70.00	78.00	70.00	53.85	61.54	42.78	93.27			796.63
Baileysville Elementary & Middle School	C	76.13	37.63		20.00	52.12	50.30	51.52	30.30	44.44	48.89	40.27	91.86			543.46
Glen Fork Elementary & Middle School	B	101.40	71.96		28.13	58.75	57.50	56.25	37.50	52.17	43.48	42.07	91.72			640.93
Herndon Cons Elementary & Middle School	C	89.86	48.87		19.44	58.43	38.20	51.69	32.58	61.54	38.46	38.26	93.33			570.66
Huff Cons Elementary & Middle School	C	73.57	44.59		20.00	59.32	52.54	51.69	31.36	53.13	53.13	46.83	92.84			579.00
Road Branch Elementary & Middle School	B	105.73	40.10		14.29	74.39	42.68	73.17	26.83	69.57	43.48	43.28	91.81			625.33
Mullens Middle School	C	89.74	35.90		21.43	52.70	51.35	54.73	27.70	55.00	60.00	28.06	92.14			568.75
Oceana Middle School	C	70.14	30.64		19.85	51.59	57.14	46.83	37.70	48.48	44.62	28.72	90.00			525.71
Pineville Middle School	C	83.37	32.38		19.33	55.16	45.24	53.17	28.57	65.15	40.00	28.46	92.28			543.11
Wyoming County East High School	C	111.55	38.06			37.22	40.00	45.00	18.89	39.13	41.30	20.96	44.44	126.85	68.66	632.06
Westside High School	C	112.83	32.63			41.67	46.30	46.76	18.52	34.23	46.85	21.24	43.74	139.35	70.47	654.59

*Schools that have a K-1 or K-2 configuration will be assigned the grade of the school to which the majority of their students feed into as third graders.

ONE VOICE
ONE FOCUS
All Students Achieving



Michael J. Martirano, Ed.D.
State Superintendent of Schools